

DATASHEET

NDEL1 Rabbit Polyclonal Antibody

CAT. NO. APA13569

KEY FEATURES

| | | | |
|---------------|---|---------------|---------------------|
| Target | NDEL1 | Source / Host | Rabbit |
| Reactivity | Human, Mouse, Rat | Clonality | Polyclonal |
| Applications | WB | Conjugation | Unconjugated |
| Form / Buffer | Liquid in 0.42% Potassium phosphate, 0.87% Sodium chloride, pH 7.3, 30% glycerol, and 0.01% sodium azide. | | Storage at -20°C |

BACKGROUND

Required for organization of the cellular microtubule array and microtubule anchoring at the centrosome. May regulate microtubule organization at least in part by targeting the microtubule severing protein KATNA1 to the centrosome. Also positively regulates the activity of the minus-end directed microtubule motor protein dynein. May enhance dynein-mediated microtubule sliding by targeting dynein to the microtubule plus ends. Required for several dynein- and microtubule-dependent processes such as the maintenance of Golgi integrity, the centripetal motion of secretory vesicles and the coupling of the nucleus and centrosome. Also required during brain development for the migration of newly formed neurons from the ventricular/subventricular zone toward the cortical plate.

APPLICATION

To ensure optimal assay performance, AREX recommends conducting reagent titration tailored to each testing system for optimal detection results.

| | |
|----|----------------|
| WB | 1:500 - 1:1000 |
|----|----------------|

*Results are sample-specific. Please refer to your local assay conditions and test parameters for reference.

PRODUCT OVERVIEW

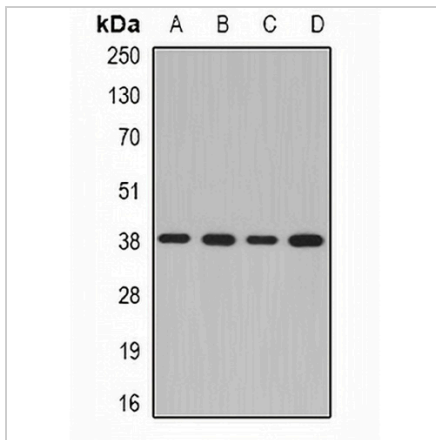
| | |
|-------------------|--|
| Description | Rabbit polyclonal antibody to NDEL1 |
| Specificity | Recognizes endogenous levels of NDEL1 protein. |
| Antibody Type | Primary antibody |
| Immunogen | Recombinant fusion protein of human NDEL1 |
| Purification | The antibody was purified by immunogen affinity chromatography. |
| Molecular Weight | Predicted: 37; Observed: 39 kD |
| Form/Buffer | Liquid in 0.42% Potassium phosphate, 0.87% Sodium chloride, pH 7.3, 30% glycerol, and 0.01% sodium azide. |
| Alternative Names | EOPA; MITAP1; NUDEL; Nuclear distribution protein nudE-like 1; Protein Nudel; Mitosin-associated protein 1 |
| Gene Symbol | NDEL1 |
| Entrez Gene | 81565(Human); 83431(Mouse); 170845(Rat) |
| SwissProt | Q9GZM8(Human); Q9ERR1(Mouse); Q78PB6(Rat) |

*AREX continuously optimizes our products. Webpage content may not reflect the latest updates. For inquiries, please contact info@arexbio.com or your local distributor.

*Clone Number, Reactivity, Source/Host and Clonality can be found in the product name and Key Features section above.

DATASHEET**NDEL1 Rabbit Polyclonal Antibody**

CAT. NO. APA13569

DATA

Western blot analysis of NDEL1 expression in SW480 (A), SKOV3 (B), mouse kidney (C), mouse brain (D) whole cell lysates. (Predicted band size: 37; 38; 40 kD; Observed band size: 39 kD)

STORAGE

Store at 4°C short term. For long term storage, store at -20°C, avoiding freeze/thaw cycles.

NOTE

For Research Use Only. Not for diagnostic, therapeutics, prophylactic or in vivo use.