

**DATASHEET**

**NKX2-5 Rabbit Polyclonal Antibody**

CAT. NO. APA13580

**KEY FEATURES**

Target	NKX2-5	Source / Host	Rabbit
Reactivity	Human, Mouse	Clonality	Polyclonal
Applications	WB	Conjugation	Unconjugated
Form / Buffer	Liquid in 0.42% Potassium phosphate, 0.87% Sodium chloride, pH 7.3, 30% glycerol, and 0.01% sodium azide.		Storage at -20°C

**BACKGROUND**

Transcription factor required for the development of the heart and the spleen . During heart development, acts as a transcriptional activator of NPPA/ANF in cooperation with GATA4 . May cooperate with TBX2 to negatively modulate expression of NPPA/ANF in the atrioventricular canal . Binds to the core DNA motif of NPPA promoter . Together with PBX1, required for spleen development through a mechanism that involves CDKN2B repression . Positively regulates transcription of genes such as COL3A1 and MMP2, resulting in increased pulmonary endothelial fibrosis in response to hypoxia .

**APPLICATION**

To ensure optimal assay performance, AREX recommends conducting reagent titration tailored to each testing system for optimal detection results.

WB	1:500 - 1:1000
----	----------------

\*Results are sample-specific. Please refer to your local assay conditions and test parameters for reference.

**PRODUCT OVERVIEW**

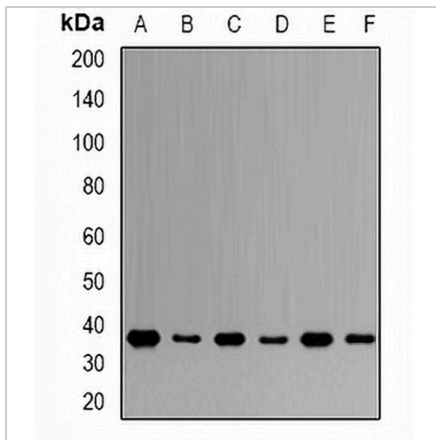
Description	Rabbit polyclonal antibody to NKX2-5
Specificity	Recognizes endogenous levels of NKX2-5 protein.
Antibody Type	Primary antibody
Immunogen	Recombinant fusion protein of human NKX2-5
Purification	The antibody was purified by immunogen affinity chromatography.
Molecular Weight	Predicted: 11; Observed: 37 kD
Form/Buffer	Liquid in 0.42% Potassium phosphate, 0.87% Sodium chloride, pH 7.3, 30% glycerol, and 0.01% sodium azide.
Alternative Names	CSX; NKX2.5; NKX2E; Homeobox protein Nkx-2.5; Cardiac-specific homeobox; Homeobox protein CSX; Homeobox protein NK-2 homolog E
Gene Symbol	NKX2-5
Entrez Gene	1482(Human); 18091(Mouse)
SwissProt	P52952(Human); P42582(Mouse)

\*AREX continuously optimizes our products. Webpage content may not reflect the latest updates. For inquiries, please contact [info@arexbio.com](mailto:info@arexbio.com) or your local distributor.

\*Clone Number, Reactivity, Source/Host and Clonality can be found in the product name and Key Features section above.

**DATASHEET****NKX2-5 Rabbit Polyclonal Antibody**

CAT. NO. APA13580

**DATA**

Western blot analysis of NKX2-5 expression in OVCAR3 (A), SW620 (B), BT474 (C), HL60 (D), mouse heart (E), mouse spleen (F) whole cell lysates. (Predicted band size: 11; 16; 34 kD; Observed band size: 37 kD)

**STORAGE**

Store at 4°C short term. For long term storage, store at -20°C, avoiding freeze/thaw cycles.

**NOTE**

For Research Use Only. Not for diagnostic, therapeutics, prophylactic or in vivo use.