

DATASHEET

TLX Rabbit Polyclonal Antibody

CAT. NO. APA13585

KEY FEATURES

Target	TLX	Source / Host	Rabbit
Reactivity	Human, Mouse, Rat	Clonality	Polyclonal
Applications	WB	Conjugation	Unconjugated
Form / Buffer	Liquid in 0.42% Potassium phosphate, 0.87% Sodium chloride, pH 7.3, 30% glycerol, and 0.01% sodium azide.		Storage at -20°C

BACKGROUND

Orphan receptor that binds DNA as a monomer to hormone response elements (HRE) containing an extended core motif half-site sequence 5'-AAGGTCA-3' in which the 5' flanking nucleotides participate in determining receptor specificity. May be required to pattern anterior brain differentiation. Involved in the regulation of retinal development and essential for vision. During retinogenesis, regulates PTEN-Cyclin D expression via binding to the promoter region of PTEN and suppressing its activity. May be involved in retinoic acid receptor (RAR) regulation in retinal cells.

APPLICATION

To ensure optimal assay performance, AREX recommends conducting reagent titration tailored to each testing system for optimal detection results.

WB	1:500 - 1:1000
----	----------------

*Results are sample-specific. Please refer to your local assay conditions and test parameters for reference.

PRODUCT OVERVIEW

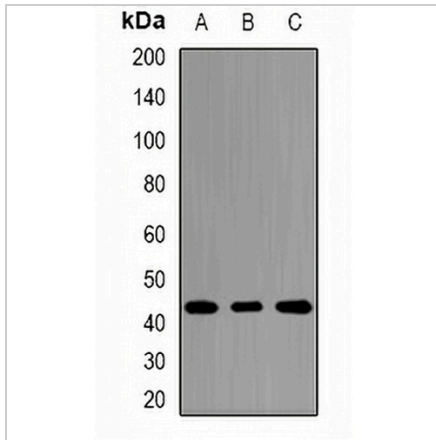
Description	Rabbit polyclonal antibody to TLX
Specificity	Recognizes endogenous levels of TLX protein.
Antibody Type	Primary antibody
Immunogen	Recombinant fusion protein of human TLX
Purification	The antibody was purified by immunogen affinity chromatography.
Molecular Weight	Predicted: 42; Observed: 43 kD
Form/Buffer	Liquid in 0.42% Potassium phosphate, 0.87% Sodium chloride, pH 7.3, 30% glycerol, and 0.01% sodium azide.
Alternative Names	TLX; Nuclear receptor subfamily 2 group E member 1; Nuclear receptor TLX; Protein tailless homolog; TII; hTII
Gene Symbol	NR2E1
Entrez Gene	7101(Human); 21907(Mouse)
SwissProt	Q9Y466(Human); Q64104(Mouse)

*AREX continuously optimizes our products. Webpage content may not reflect the latest updates. For inquiries, please contact info@arexbio.com or your local distributor.

*Clone Number, Reactivity, Source/Host and Clonality can be found in the product name and Key Features section above.

DATASHEET**TLX Rabbit Polyclonal Antibody**

CAT. NO. APA13585

DATA

Western blot analysis of TLX expression in HepG2 (A), Jurkat (B), mouse liver (C) whole cell lysates. (Predicted band size: 42; 46 kD; Observed band size: 43 kD)

STORAGE

Store at 4°C short term. For long term storage, store at -20°C, avoiding freeze/thaw cycles.

NOTE

For Research Use Only. Not for diagnostic, therapeutics, prophylactic or in vivo use.