

DATASHEET

LRH-1 Rabbit Polyclonal Antibody

CAT. NO. APA13586

KEY FEATURES

Target	LRH-1	Source / Host	Rabbit
Reactivity	Human, Mouse, Rat	Clonality	Polyclonal
Applications	WB, IHC, IF/ICC	Conjugation	Unconjugated
Form / Buffer	Liquid in 0.42% Potassium phosphate, 0.87% Sodium chloride, pH 7.3, 30% glycerol, and 0.01% sodium azide.		Storage at -20°C

BACKGROUND

Orphan nuclear receptor that binds DNA as a monomer to the 5'-TCAAGGCCA-3' sequence and controls expression of target genes: regulates key biological processes, such as early embryonic development, cholesterol and bile acid synthesis pathways, as well as liver and pancreas morphogenesis. Ligand-binding causes conformational change which causes recruitment of coactivators, promoting target gene activation. The specific ligand is unknown, but specific phospholipids, such as phosphatidylethanolamine, phosphatidylserine, dilauroyl phosphatidylcholine and diundecanoyl phosphatidylcholine can act as ligand in vitro. Acts as a pioneer transcription factor, which unwraps target DNA from histones and elicits local opening of closed chromatin.

APPLICATION

To ensure optimal assay performance, AREX recommends conducting reagent titration tailored to each testing system for optimal detection results.

WB	1:500 - 1:2000
IHC	1:50 - 1:200
IF/ICC	1:50 - 1:200

*Results are sample-specific. Please refer to your local assay conditions and test parameters for reference.

PRODUCT OVERVIEW

Description	Rabbit polyclonal antibody to LRH-1
Specificity	Recognizes endogenous levels of LRH-1 protein.
Antibody Type	Primary antibody
Immunogen	Recombinant fusion protein of human LRH-1
Purification	The antibody was purified by immunogen affinity chromatography.
Molecular Weight	Predicted: 42; Observed: 61; 42 kD
Form/Buffer	Liquid in 0.42% Potassium phosphate, 0.87% Sodium chloride, pH 7.3, 30% glycerol, and 0.01% sodium azide.
Alternative Names	B1F; CPF; FTF; Nuclear receptor subfamily 5 group A member 2; Alpha-1-fetoprotein transcription factor; B1-binding factor; hB1F; CYP7A promoter-binding factor; Hepatocytic transcription factor; Liver receptor homolog 1; LRH-1
Gene Symbol	NR5A2
Entrez Gene	2494(Human); 26424(Mouse); 60349(Rat)
SwissProt	O00482(Human); P45448(Mouse); Q9QWM1(Rat)

*AREX continuously optimizes our products. Webpage content may not reflect the latest updates. For inquiries, please contact info@arexbio.com or your local distributor.

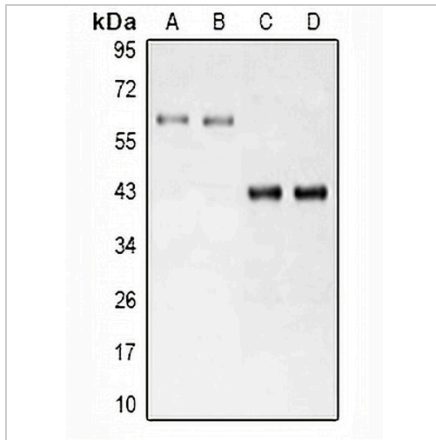
*Clone Number, Reactivity, Source/Host and Clonality can be found in the product name and Key Features section above.

DATASHEET

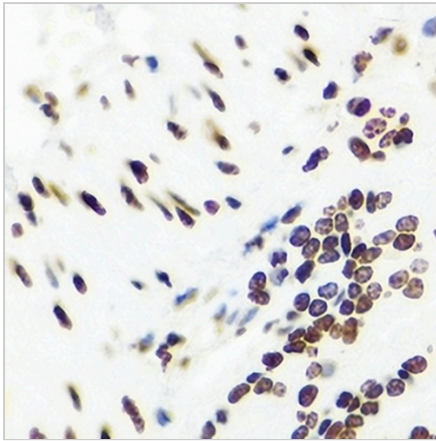
LRH-1 Rabbit Polyclonal Antibody

CAT. NO. APA13586

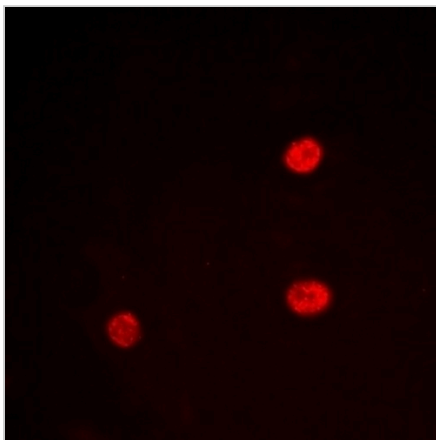
DATA



Western blot analysis of LRH-1 expression in MCF7 (A), HeLa (B), mouse liver (C), rat liver (D) whole cell lysates. (Predicted band size: 42; 53; 56; 61 kD; Observed band size: 61; 42 kD)



Immunohistochemical analysis of LRH-1 staining in mouse lung formalin fixed paraffin embedded tissue section. The section was pre-treated using heat mediated antigen retrieval with sodium citrate buffer (pH 6.0). The section was then incubated with the antibody at room temperature and detected using an HRP conjugated compact polymer system. DAB was used as the chromogen. The section was then counterstained with haematoxylin and mounted with DPX.



Immunofluorescent analysis of LRH-1 staining in HeLa cells. Formalin-fixed cells were permeabilized with 0.1% Triton X-100 in TBS for 5-10 minutes and blocked with 3% BSA-PBS for 30 minutes at room temperature. Cells were probed with the primary antibody in 3% BSA-PBS and incubated overnight at 4 °C in a humidified chamber. Cells were washed with PBST and incubated with a DyLight 594-conjugated secondary antibody (red) in PBS at room temperature in the dark.

STORAGE

Store at 4°C short term. For long term storage, store at -20°C, avoiding freeze/thaw cycles.

NOTE

For Research Use Only. Not for diagnostic, therapeutics, prophylactic or in vivo use.