

DATASHEET

NUDC Rabbit Polyclonal Antibody

CAT. NO. APA13587

KEY FEATURES

Target	NUDC	Source / Host	Rabbit
Reactivity	Human, Mouse, Rat	Clonality	Polyclonal
Applications	WB	Conjugation	Unconjugated
Form / Buffer	Liquid in 0.42% Potassium phosphate, 0.87% Sodium chloride, pH 7.3, 30% glycerol, and 0.01% sodium azide.		Storage at -20°C

BACKGROUND

Plays a role in neurogenesis and neuronal migration . Necessary for correct formation of mitotic spindles and chromosome separation during mitosis . Necessary for cytokinesis and cell proliferation .

APPLICATION

To ensure optimal assay performance, AREX recommends conducting reagent titration tailored to each testing system for optimal detection results.

WB	1:500 - 1:1000
----	----------------

*Results are sample-specific. Please refer to your local assay conditions and test parameters for reference.

PRODUCT OVERVIEW

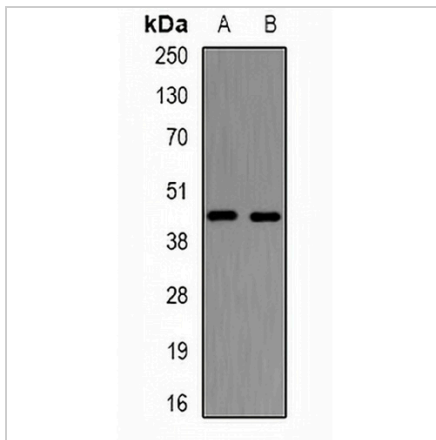
Description	Rabbit polyclonal antibody to NUDC
Specificity	Recognizes endogenous levels of NUDC protein.
Antibody Type	Primary antibody
Immunogen	Recombinant fusion protein of human NUDC
Purification	The antibody was purified by immunogen affinity chromatography.
Molecular Weight	Predicted: 38 kD; Observed: 45 kD
Form/Buffer	Liquid in 0.42% Potassium phosphate, 0.87% Sodium chloride, pH 7.3, 30% glycerol, and 0.01% sodium azide.
Alternative Names	Nuclear migration protein nudC; Nuclear distribution protein C homolog
Gene Symbol	NUDC
Entrez Gene	10726(Human); 18221(Mouse); 29648(Rat)
SwissProt	Q9Y266(Human); O35685(Mouse); Q63525(Rat)

*AREX continuously optimizes our products. Webpage content may not reflect the latest updates. For inquiries, please contact info@arexbio.com or your local distributor.

*Clone Number, Reactivity, Source/Host and Clonality can be found in the product name and Key Features section above.

DATASHEET**NUDC Rabbit Polyclonal Antibody**

CAT. NO. APA13587

DATA

Western blot analysis of NUDC expression in HeLa (A), HepG2 (B) whole cell lysates.
(Predicted band size: 38 kD; Observed band size: 45 kD)

STORAGE

Store at 4°C short term. For long term storage, store at -20°C, avoiding freeze/thaw cycles.

NOTE

For Research Use Only. Not for diagnostic, therapeutics, prophylactic or in vivo use.