

DATASHEET

OLR1 Rabbit Polyclonal Antibody

CAT. NO. APA13592

KEY FEATURES

Target	OLR1	Source / Host	Rabbit
Reactivity	Human	Clonality	Polyclonal
Applications	WB, IHC	Conjugation	Unconjugated
Form / Buffer	Liquid in 0.42% Potassium phosphate, 0.87% Sodium chloride, pH 7.3, 30% glycerol, and 0.01% sodium azide.		Storage at -20°C

BACKGROUND

Receptor that mediates the recognition, internalization and degradation of oxidatively modified low density lipoprotein (oxLDL) by vascular endothelial cells. OxLDL is a marker of atherosclerosis that induces vascular endothelial cell activation and dysfunction, resulting in pro-inflammatory responses, pro-oxidative conditions and apoptosis. Its association with oxLDL induces the activation of NF-kappa-B through an increased production of intracellular reactive oxygen and a variety of pro-atherogenic cellular responses including a reduction of nitric oxide (NO) release, monocyte adhesion and apoptosis.

APPLICATION

To ensure optimal assay performance, AREX recommends conducting reagent titration tailored to each testing system for optimal detection results.

WB	1:500 - 1:2000
IHC	1:50 - 1:200

*Results are sample-specific. Please refer to your local assay conditions and test parameters for reference.

PRODUCT OVERVIEW

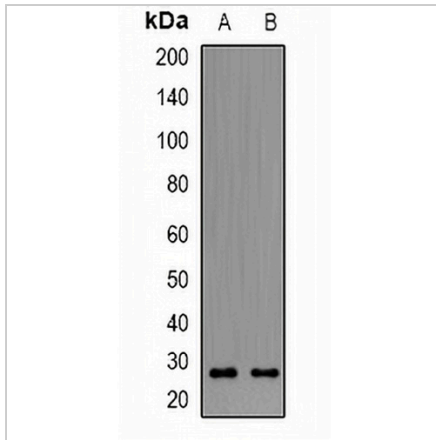
Description	Rabbit polyclonal antibody to OLR1
Specificity	Recognizes endogenous levels of OLR1 protein.
Antibody Type	Primary antibody
Immunogen	Recombinant fusion protein of human OLR1
Purification	The antibody was purified by immunogen affinity chromatography.
Molecular Weight	Predicted: 20; Observed: 30 kD
Form/Buffer	Liquid in 0.42% Potassium phosphate, 0.87% Sodium chloride, pH 7.3, 30% glycerol, and 0.01% sodium azide.
Alternative Names	CLEC8A; LOX1; Oxidized low-density lipoprotein receptor 1; Ox-LDL receptor 1; C-type lectin domain family 8 member A; Lectin-like oxidized LDL receptor 1; LOX-1; Lectin-like oxLDL receptor 1; hLOX-1; Lectin-type oxidized LDL receptor 1
Gene Symbol	OLR1
Entrez Gene	4973(Human)
SwissProt	P78380(Human)

*AREX continuously optimizes our products. Webpage content may not reflect the latest updates. For inquiries, please contact info@arexbio.com or your local distributor.

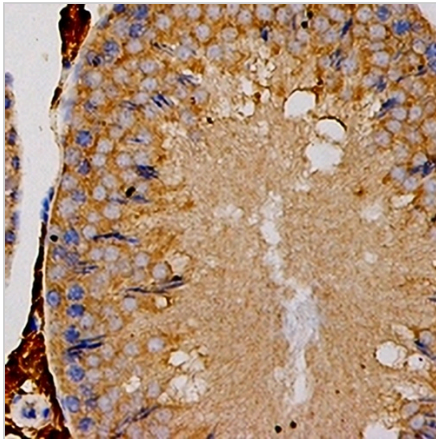
*Clone Number, Reactivity, Source/Host and Clonality can be found in the product name and Key Features section above.

DATASHEET**OLR1 Rabbit Polyclonal Antibody**

CAT. NO. APA13592

DATA

Western blot analysis of OLR1 expression in HeLa (A), HepG2 (B) whole cell lysates. (Predicted band size: 20; 21; 30 kD; Observed band size: 30 kD)



Immunohistochemical analysis of OLR1 staining in mouse testis formalin fixed paraffin embedded tissue section. The section was pre-treated using heat mediated antigen retrieval with sodium citrate buffer (pH 6.0). The section was then incubated with the antibody at room temperature and detected using an HRP conjugated compact polymer system. DAB was used as the chromogen. The section was then counterstained with haematoxylin and mounted with DPX.

STORAGE

Store at 4°C short term. For long term storage, store at -20°C, avoiding freeze/thaw cycles.

NOTE

For Research Use Only. Not for diagnostic, therapeutics, prophylactic or in vivo use.