

**DATASHEET**

**OTX2 Rabbit Polyclonal Antibody**

CAT. NO. APA13597

**KEY FEATURES**

Target	OTX2	Source / Host	Rabbit
Reactivity	Human	Clonality	Polyclonal
Applications	WB	Conjugation	Unconjugated
Form / Buffer	Liquid in 0.42% Potassium phosphate, 0.87% Sodium chloride, pH 7.3, 30% glycerol, and 0.01% sodium azide.		Storage at -20°C

**BACKGROUND**

Transcription factor probably involved in the development of the brain and the sense organs. Can bind to the bicoid/BCD target sequence (BTS): 5'-TCTAATCCC-3'.

**APPLICATION**

To ensure optimal assay performance, AREX recommends conducting reagent titration tailored to each testing system for optimal detection results.

WB	1:500 - 1:2000
----	----------------

\*Results are sample-specific. Please refer to your local assay conditions and test parameters for reference.

**PRODUCT OVERVIEW**

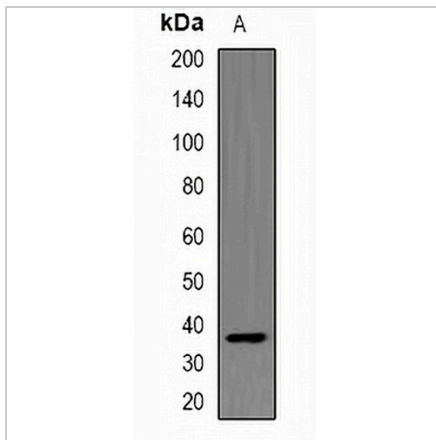
Description	Rabbit polyclonal antibody to OTX2
Specificity	Recognizes endogenous levels of OTX2 protein.
Antibody Type	Primary antibody
Immunogen	Recombinant fusion protein of human OTX2
Purification	The antibody was purified by immunogen affinity chromatography.
Molecular Weight	Predicted: 31; Observed: 32 kD
Form/Buffer	Liquid in 0.42% Potassium phosphate, 0.87% Sodium chloride, pH 7.3, 30% glycerol, and 0.01% sodium azide.
Alternative Names	Homeobox protein OTX2; Orthodenticle homolog 2
Gene Symbol	OTX2
Entrez Gene	5015(Human)
SwissProt	P32243(Human)

\*AREX continuously optimizes our products. Webpage content may not reflect the latest updates. For inquiries, please contact [info@arexbio.com](mailto:info@arexbio.com) or your local distributor.

\*Clone Number, Reactivity, Source/Host and Clonality can be found in the product name and Key Features section above.

**DATASHEET****OTX2 Rabbit Polyclonal Antibody**

CAT. NO. APA13597

**DATA**

Western blot analysis of OTX2 expression in A673 (A) whole cell lysates. (Predicted band size: 31; 32 kD; Observed band size: 32 kD)

**STORAGE**

Store at 4°C short term. For long term storage, store at -20°C, avoiding freeze/thaw cycles.

**NOTE**

For Research Use Only. Not for diagnostic, therapeutics, prophylactic or in vivo use.