

DATASHEET

P2Y1 Rabbit Polyclonal Antibody

CAT. NO. APA13599

KEY FEATURES

Target	P2Y1	Source / Host	Rabbit
Reactivity	Human, Mouse, Rat	Clonality	Polyclonal
Applications	WB	Conjugation	Unconjugated
Form / Buffer	Liquid in 0.42% Potassium phosphate, 0.87% Sodium chloride, pH 7.3, 30% glycerol, and 0.01% sodium azide.		Storage at -20°C

BACKGROUND

Receptor for extracellular adenine nucleotides such as ADP . In platelets, binding to ADP leads to mobilization of intracellular calcium ions via activation of phospholipase C, a change in platelet shape, and ultimately platelet aggregation .

APPLICATION

To ensure optimal assay performance, AREX recommends conducting reagent titration tailored to each testing system for optimal detection results.

WB	1:500 - 1:2000
----	----------------

*Results are sample-specific. Please refer to your local assay conditions and test parameters for reference.

PRODUCT OVERVIEW

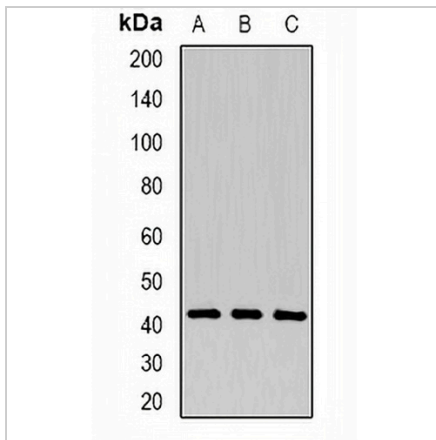
Description	Rabbit polyclonal antibody to P2Y1
Specificity	Recognizes endogenous levels of P2Y1 protein.
Antibody Type	Primary antibody
Immunogen	Recombinant fusion protein of human P2Y1
Purification	The antibody was purified by immunogen affinity chromatography.
Molecular Weight	Predicted: 42 kD; Observed: 42 kD
Form/Buffer	Liquid in 0.42% Potassium phosphate, 0.87% Sodium chloride, pH 7.3, 30% glycerol, and 0.01% sodium azide.
Alternative Names	P2Y purinoceptor 1; P2Y1; ATP receptor; Purinergic receptor
Gene Symbol	P2RY1
Entrez Gene	5028(Human)
SwissProt	P47900(Human)

*AREX continuously optimizes our products. Webpage content may not reflect the latest updates. For inquiries, please contact info@arexbio.com or your local distributor.

*Clone Number, Reactivity, Source/Host and Clonality can be found in the product name and Key Features section above.

DATASHEET**P2Y1 Rabbit Polyclonal Antibody**

CAT. NO. APA13599

DATA

Western blot analysis of P2Y1 expression in A549 (A), mouse liver (B), mouse heart (C) whole cell lysates. (Predicted band size: 42 kD; Observed band size: 42 kD)

STORAGE

Store at 4°C short term. For long term storage, store at -20°C, avoiding freeze/thaw cycles.

NOTE

For Research Use Only. Not for diagnostic, therapeutics, prophylactic or in vivo use.