

**DATASHEET**

**PAIP1 Rabbit Polyclonal Antibody**

CAT. NO. APA13601

**KEY FEATURES**

Target	PAIP1	Source / Host	Rabbit
Reactivity	Human, Mouse, Rat	Clonality	Polyclonal
Applications	WB	Conjugation	Unconjugated
Form / Buffer	Liquid in 0.42% Potassium phosphate, 0.87% Sodium chloride, pH 7.3, 30% glycerol, and 0.01% sodium azide.		Storage at -20°C

**BACKGROUND**

Acts as a coactivator in the regulation of translation initiation of poly(A)-containing mRNAs. Its stimulatory activity on translation is mediated via its action on PABPC1. Competes with PAIP2 for binding to PABPC1. Its association with EIF4A and PABPC1 may potentiate contacts between mRNA termini. May also be involved in translationally coupled mRNA turnover. Implicated with other RNA-binding proteins in the cytoplasmic deadenylation/translational and decay interplay of the FOS mRNA mediated by the major coding-region determinant of instability (mCRD) domain.

**APPLICATION**

To ensure optimal assay performance, AREX recommends conducting reagent titration tailored to each testing system for optimal detection results.

WB	1:500 - 1:1000
----	----------------

\*Results are sample-specific. Please refer to your local assay conditions and test parameters for reference.

**PRODUCT OVERVIEW**

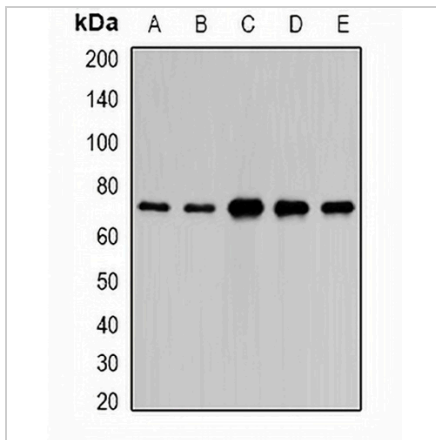
Description	Rabbit polyclonal antibody to PAIP1
Specificity	Recognizes endogenous levels of PAIP1 protein.
Antibody Type	Primary antibody
Immunogen	Recombinant fusion protein of human PAIP1
Purification	The antibody was purified by immunogen affinity chromatography.
Molecular Weight	Predicted: 42; Observed: 70 kD
Form/Buffer	Liquid in 0.42% Potassium phosphate, 0.87% Sodium chloride, pH 7.3, 30% glycerol, and 0.01% sodium azide.
Alternative Names	Polyadenylate-binding protein-interacting protein 1; PABP-interacting protein 1; PAIP-1; Poly(A)-binding protein-interacting protein 1
Gene Symbol	PAIP1
Entrez Gene	10605(Human); 218693(Mouse)
SwissProt	Q9H074(Human); Q8VE62(Mouse)

\*AREX continuously optimizes our products. Webpage content may not reflect the latest updates. For inquiries, please contact [info@arexbio.com](mailto:info@arexbio.com) or your local distributor.

\*Clone Number, Reactivity, Source/Host and Clonality can be found in the product name and Key Features section above.

**DATASHEET****PAIP1 Rabbit Polyclonal Antibody**

CAT. NO. APA13601

**DATA**

Western blot analysis of PAIP1 expression in HepG2 (A), A549 (B), mouse liver (C), mouse kidney (D), rat brain (E) whole cell lysates. (Predicted band size: 42; 45; 53 kD; Observed band size: 70 kD)

**STORAGE**

Store at 4°C short term. For long term storage, store at -20°C, avoiding freeze/thaw cycles.

**NOTE**

For Research Use Only. Not for diagnostic, therapeutics, prophylactic or in vivo use.