

DATASHEET

PAX3 Rabbit Polyclonal Antibody

CAT. NO. APA13602

KEY FEATURES

Target	PAX3	Source / Host	Rabbit
Reactivity	Human, Mouse	Clonality	Polyclonal
Applications	WB	Conjugation	Unconjugated
Form / Buffer	Liquid in 0.42% Potassium phosphate, 0.87% Sodium chloride, pH 7.3, 30% glycerol, and 0.01% sodium azide.		Storage at -20°C

BACKGROUND

Transcription factor that may regulate cell proliferation, migration and apoptosis. Involved in neural development and myogenesis. Transcriptional activator of MITF, acting synergistically with SOX10 .

APPLICATION

To ensure optimal assay performance, AREX recommends conducting reagent titration tailored to each testing system for optimal detection results.

WB	1:500 - 1:1000
----	----------------

*Results are sample-specific. Please refer to your local assay conditions and test parameters for reference.

PRODUCT OVERVIEW

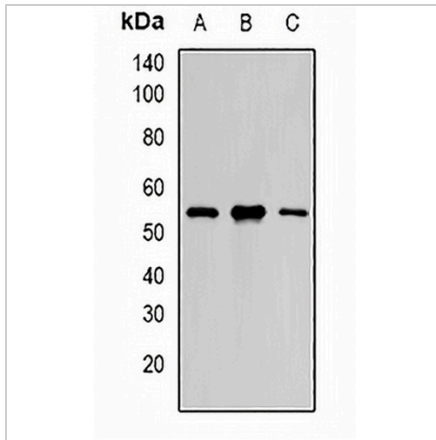
Description	Rabbit polyclonal antibody to PAX3
Specificity	Recognizes endogenous levels of PAX3 protein.
Antibody Type	Primary antibody
Immunogen	Recombinant fusion protein of human PAX3
Purification	The antibody was purified by immunogen affinity chromatography.
Molecular Weight	Predicted: 22; Observed: 53 kD
Form/Buffer	Liquid in 0.42% Potassium phosphate, 0.87% Sodium chloride, pH 7.3, 30% glycerol, and 0.01% sodium azide.
Alternative Names	HUP2; Paired box protein Pax-3; HuP2
Gene Symbol	PAX3
Entrez Gene	5077(Human); 18505(Mouse)
SwissProt	P23760(Human); P24610(Mouse)

*AREX continuously optimizes our products. Webpage content may not reflect the latest updates. For inquiries, please contact info@arexbio.com or your local distributor.

*Clone Number, Reactivity, Source/Host and Clonality can be found in the product name and Key Features section above.

DATASHEET**PAX3 Rabbit Polyclonal Antibody**

CAT. NO. APA13602

DATA

Western blot analysis of PAX3 expression in U251 (A), K562 (B), HeLa (C) whole cell lysates.
(Predicted band size: 22; 24; 44; 45; 52; 53; 55 kD; Observed band size: 53 kD)

STORAGE

Store at 4°C short term. For long term storage, store at -20°C, avoiding freeze/thaw cycles.

NOTE

For Research Use Only. Not for diagnostic, therapeutics, prophylactic or in vivo use.