

DATASHEET

PCM1 Rabbit Polyclonal Antibody

CAT. NO. APA13604

KEY FEATURES

Target	PCM1	Source / Host	Rabbit
Reactivity	Human	Clonality	Polyclonal
Applications	WB, IHC	Conjugation	Unconjugated
Form / Buffer	Liquid in 0.42% Potassium phosphate, 0.87% Sodium chloride, pH 7.3, 30% glycerol, and 0.01% sodium azide.		Storage at -20°C

BACKGROUND

Required for centrosome assembly and function . Essential for the correct localization of several centrosomal proteins including CEP250, CETN3, PCNT and NEK2 . Required to anchor microtubules to the centrosome . Also involved in cilium biogenesis by recruiting the BBSome, a ciliary protein complex involved in cilium biogenesis, to the centriolar satellites . Recruits the tubulin polyglutamylase complex (TPGC) to centriolar satellites .

APPLICATION

To ensure optimal assay performance, AREX recommends conducting reagent titration tailored to each testing system for optimal detection results.

WB	1:500 - 1:2000
IHC	1:50 - 1:200

*Results are sample-specific. Please refer to your local assay conditions and test parameters for reference.

PRODUCT OVERVIEW

Description	Rabbit polyclonal antibody to PCM1
Specificity	Recognizes endogenous levels of PCM1 protein.
Antibody Type	Primary antibody
Immunogen	Recombinant fusion protein of human PCM1
Purification	The antibody was purified by immunogen affinity chromatography.
Molecular Weight	Predicted: 228 kD; Observed: 270 kD
Form/Buffer	Liquid in 0.42% Potassium phosphate, 0.87% Sodium chloride, pH 7.3, 30% glycerol, and 0.01% sodium azide.
Alternative Names	Pericentriolar material 1 protein; PCM-1; hPCM-1
Gene Symbol	PCM1
Entrez Gene	5108(Human)
SwissProt	Q15154(Human)

*AREX continuously optimizes our products. Webpage content may not reflect the latest updates. For inquiries, please contact info@arexbio.com or your local distributor.

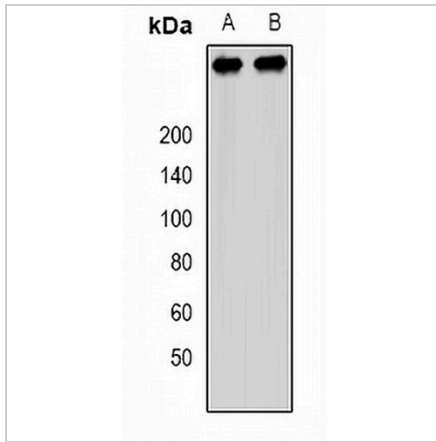
*Clone Number, Reactivity, Source/Host and Clonality can be found in the product name and Key Features section above.

DATASHEET

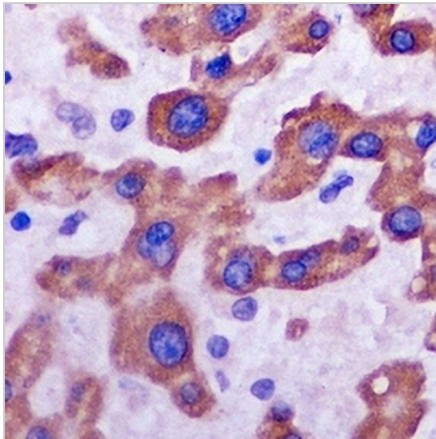
PCM1 Rabbit Polyclonal Antibody

CAT. NO. APA13604

DATA



Western blot analysis of PCM1 expression in SW480 (A), 293T (B) whole cell lysates. (Predicted band size: 228 kD; Observed band size: 270 kD)



Immunohistochemical analysis of PCM1 staining in mouse liver formalin fixed paraffin embedded tissue section. The section was pre-treated using heat mediated antigen retrieval with sodium citrate buffer (pH 6.0). The section was then incubated with the antibody at room temperature and detected using an HRP conjugated compact polymer system. DAB was used as the chromogen. The section was then counterstained with haematoxylin and mounted with DPX.

STORAGE

Store at 4°C short term. For long term storage, store at -20°C, avoiding freeze/thaw cycles.

NOTE

For Research Use Only. Not for diagnostic, therapeutics, prophylactic or in vivo use.