

**DATASHEET**

**PDCD2L Rabbit Polyclonal Antibody**

CAT. NO. APA13605

**KEY FEATURES**

Target	PDCD2L	Source / Host	Rabbit
Reactivity	Human, Mouse, Rat	Clonality	Polyclonal
Applications	WB, IHC	Conjugation	Unconjugated
Form / Buffer	Liquid in 0.42% Potassium phosphate, 0.87% Sodium chloride, pH 7.3, 30% glycerol, and 0.01% sodium azide.		Storage at -20°C

**BACKGROUND**

May function as a chaperone for ribosomal protein u55; its function appears redundant to PDCD2.

**APPLICATION**

To ensure optimal assay performance, AREX recommends conducting reagent titration tailored to each testing system for optimal detection results.

WB	1:500 - 1:2000
IHC	1:50 - 1:200

\*Results are sample-specific. Please refer to your local assay conditions and test parameters for reference.

**PRODUCT OVERVIEW**

Description	Rabbit polyclonal antibody to PDCD2L
Specificity	Recognizes endogenous levels of PDCD2L protein.
Antibody Type	Primary antibody
Immunogen	Recombinant fusion protein of human PDCD2L
Purification	The antibody was purified by immunogen affinity chromatography.
Molecular Weight	Predicted: 39 kD; Observed: 45 kD
Form/Buffer	Liquid in 0.42% Potassium phosphate, 0.87% Sodium chloride, pH 7.3, 30% glycerol, and 0.01% sodium azide.
Alternative Names	Programmed cell death protein 2-like
Gene Symbol	PDCD2L
Entrez Gene	84306(Human)
SwissProt	Q9BRP1(Human)

\*AREX continuously optimizes our products. Webpage content may not reflect the latest updates. For inquiries, please contact [info@arexbio.com](mailto:info@arexbio.com) or your local distributor.

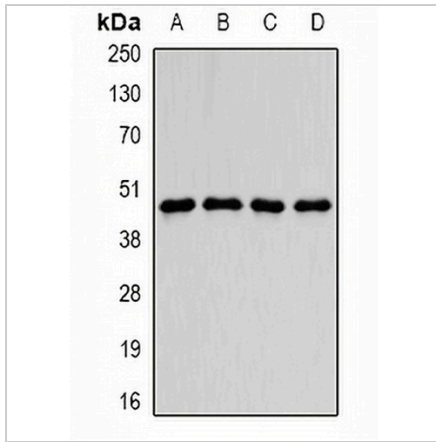
\*Clone Number, Reactivity, Source/Host and Clonality can be found in the product name and Key Features section above.

**DATASHEET**

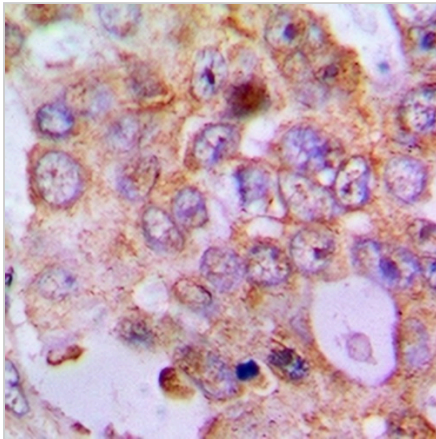
**PDCD2L Rabbit Polyclonal Antibody**

CAT. NO. APA13605

**DATA**



Western blot analysis of PDCD2L expression in MCF7 (A), SKOV3 (B), mouse brain (C), mouse heart (D) whole cell lysates. (Predicted band size: 39 kD; Observed band size: 45 kD)



Immunohistochemical analysis of PDCD2L staining in human lung formalin fixed paraffin embedded tissue section. The section was pre-treated using heat mediated antigen retrieval with sodium citrate buffer (pH 6.0). The section was then incubated with the antibody at room temperature and detected using an HRP conjugated compact polymer system. DAB was used as the chromogen. The section was then counterstained with haematoxylin and mounted with DPX.

**STORAGE**

Store at 4°C short term. For long term storage, store at -20°C, avoiding freeze/thaw cycles.

**NOTE**

For Research Use Only. Not for diagnostic, therapeutics, prophylactic or in vivo use.