

**DATASHEET**

**PDE1B Rabbit Polyclonal Antibody**

CAT. NO. APA13607

**KEY FEATURES**

Target	PDE1B	Source / Host	Rabbit
Reactivity	Human, Mouse, Rat	Clonality	Polyclonal
Applications	WB, IHC	Conjugation	Unconjugated
Form / Buffer	Liquid in 0.42% Potassium phosphate, 0.87% Sodium chloride, pH 7.3, 30% glycerol, and 0.01% sodium azide.		Storage at -20°C

**BACKGROUND**

Cyclic nucleotide phosphodiesterase with a dual specificity for the second messengers cAMP and cGMP, which are key regulators of many important physiological processes . Has a preference for cGMP as a substrate .

**APPLICATION**

To ensure optimal assay performance, AREX recommends conducting reagent titration tailored to each testing system for optimal detection results.

WB	1:500 - 1:1000
IHC	1:50 - 1:200

\*Results are sample-specific. Please refer to your local assay conditions and test parameters for reference.

**PRODUCT OVERVIEW**

Description	Rabbit polyclonal antibody to PDE1B
Specificity	Recognizes endogenous levels of PDE1B protein.
Antibody Type	Primary antibody
Immunogen	Recombinant fusion protein of human PDE1B
Purification	The antibody was purified by immunogen affinity chromatography.
Molecular Weight	Predicted: 59; Observed: 59 kD
Form/Buffer	Liquid in 0.42% Potassium phosphate, 0.87% Sodium chloride, pH 7.3, 30% glycerol, and 0.01% sodium azide.
Alternative Names	PDE1B1; PDES1B; Calcium/calmodulin-dependent 3',5'-cyclic nucleotide phosphodiesterase 1B; Cam-PDE 1B; 63 kDa Cam-PDE
Gene Symbol	PDE1B
Entrez Gene	5153(Human); 18574(Mouse); 29691(Rat)
SwissProt	Q01064(Human); Q01065(Mouse); Q01066(Rat)

\*AREX continuously optimizes our products. Webpage content may not reflect the latest updates. For inquiries, please contact [info@arexbio.com](mailto:info@arexbio.com) or your local distributor.

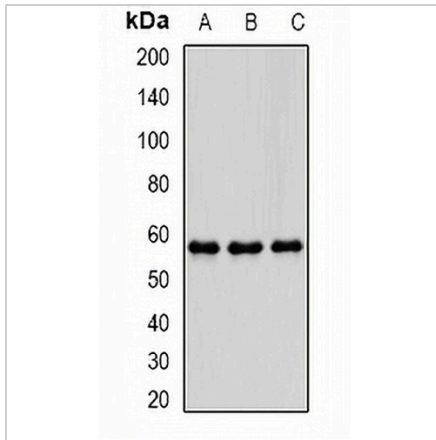
\*Clone Number, Reactivity, Source/Host and Clonality can be found in the product name and Key Features section above.

**DATASHEET**

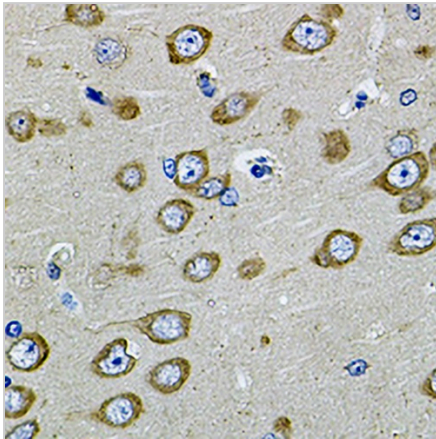
**PDE1B Rabbit Polyclonal Antibody**

CAT. NO. APA13607

**DATA**



Western blot analysis of PDE1B expression in THP1 (A), mouse brain (B), mouse spleen (C) whole cell lysates. (Predicted band size: 59; 61 kD; Observed band size: 59 kD)



Immunohistochemical analysis of PDE1B staining in rat brain formalin fixed paraffin embedded tissue section. The section was pre-treated using heat mediated antigen retrieval with sodium citrate buffer (pH 6.0). The section was then incubated with the antibody at room temperature and detected using an HRP conjugated compact polymer system. DAB was used as the chromogen. The section was then counterstained with haematoxylin and mounted with DPX.

**STORAGE**

Store at 4°C short term. For long term storage, store at -20°C, avoiding freeze/thaw cycles.

**NOTE**

For Research Use Only. Not for diagnostic, therapeutics, prophylactic or in vivo use.