

DATASHEET

PDE4D Rabbit Polyclonal Antibody

CAT. NO. APA13608

KEY FEATURES

Target	PDE4D	Source / Host	Rabbit
Reactivity	Human, Mouse, Rat	Clonality	Polyclonal
Applications	WB	Conjugation	Unconjugated
Form / Buffer	Liquid in 0.42% Potassium phosphate, 0.87% Sodium chloride, pH 7.3, 30% glycerol, and 0.01% sodium azide.		Storage at -20°C

BACKGROUND

Hydrolyzes the second messenger cAMP, which is a key regulator of many important physiological processes.

APPLICATION

To ensure optimal assay performance, AREX recommends conducting reagent titration tailored to each testing system for optimal detection results.

WB	1:500 - 1:1000
----	----------------

*Results are sample-specific. Please refer to your local assay conditions and test parameters for reference.

PRODUCT OVERVIEW

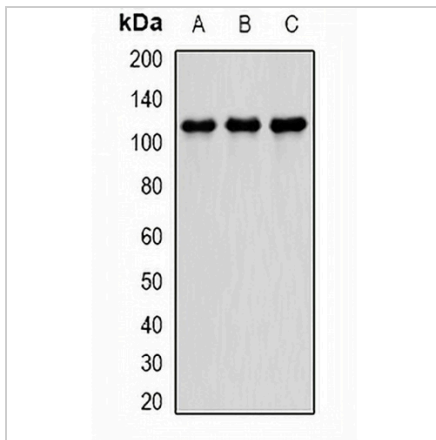
Description	Rabbit polyclonal antibody to PDE4D
Specificity	Recognizes endogenous levels of PDE4D protein.
Antibody Type	Primary antibody
Immunogen	Recombinant fusion protein of human PDE4D
Purification	The antibody was purified by immunogen affinity chromatography.
Molecular Weight	Predicted: 23-24; Observed: 110 kD
Form/Buffer	Liquid in 0.42% Potassium phosphate, 0.87% Sodium chloride, pH 7.3, 30% glycerol, and 0.01% sodium azide.
Alternative Names	DPDE3; cAMP-specific 3',5'-cyclic phosphodiesterase 4D; DPDE3; PDE43
Gene Symbol	PDE4D
Entrez Gene	5144(Human); 238871(Mouse); 24627(Rat)
SwissProt	Q08499(Human); Q01063(Mouse); P14270(Rat)

*AREX continuously optimizes our products. Webpage content may not reflect the latest updates. For inquiries, please contact info@arexbio.com or your local distributor.

*Clone Number, Reactivity, Source/Host and Clonality can be found in the product name and Key Features section above.

DATASHEET**PDE4D Rabbit Polyclonal Antibody**

CAT. NO. APA13608

DATA

Western blot analysis of PDE4D expression in HT29 (A), A549 (B), SW480 (C) whole cell lysates. (Predicted band size: 23-24; 57-91 kD; Observed band size: 110 kD)

STORAGE

Store at 4°C short term. For long term storage, store at -20°C, avoiding freeze/thaw cycles.

NOTE

For Research Use Only. Not for diagnostic, therapeutics, prophylactic or in vivo use.