

DATASHEET

PDHB Rabbit Polyclonal Antibody

CAT. NO. APA13609

KEY FEATURES

Target	PDHB	Source / Host	Rabbit
Reactivity	Human, Mouse, Rat	Clonality	Polyclonal
Applications	WB	Conjugation	Unconjugated
Form / Buffer	Liquid in 0.42% Potassium phosphate, 0.87% Sodium chloride, pH 7.3, 30% glycerol, and 0.01% sodium azide.		Storage at -20°C

BACKGROUND

Together with PDHA1 forms the heterotetrameric E1 subunit of the pyruvate dehydrogenase (PDH) complex. The PDH complex catalyzes the overall conversion of pyruvate to acetyl-CoA and CO₂, and thereby links cytoplasmic glycolysis and the mitochondrial tricarboxylic acid (TCA) cycle (Probable). It contains multiple copies of three enzymatic components: pyruvate dehydrogenase (E1), dihydrolipoamide acetyltransferase (E2) and dihydrolipoamide dehydrogenase (E3) (Probable). The E1 subunit catalyzes both the thiamine pyrophosphate (TPP)-dependent decarboxylation of pyruvate and the reductive acetylation of a lipoyl group covalently linked to the lipoyl-bearing domains of E2.

APPLICATION

To ensure optimal assay performance, AREX recommends conducting reagent titration tailored to each testing system for optimal detection results.

WB	1:500 - 1:2000
----	----------------

*Results are sample-specific. Please refer to your local assay conditions and test parameters for reference.

PRODUCT OVERVIEW

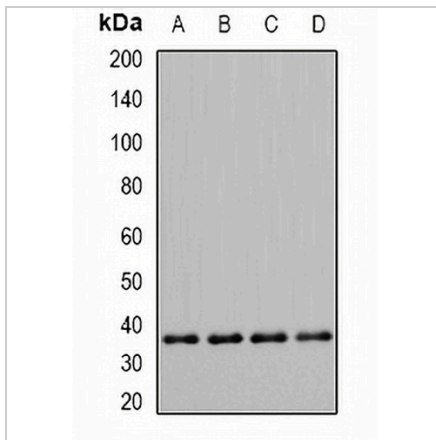
Description	Rabbit polyclonal antibody to PDHB
Specificity	Recognizes endogenous levels of PDHB protein.
Antibody Type	Primary antibody
Immunogen	Recombinant fusion protein of human PDHB
Purification	The antibody was purified by immunogen affinity chromatography.
Molecular Weight	Predicted: 37; Observed: 37 kD
Form/Buffer	Liquid in 0.42% Potassium phosphate, 0.87% Sodium chloride, pH 7.3, 30% glycerol, and 0.01% sodium azide.
Alternative Names	PHE1B; Pyruvate dehydrogenase E1 component subunit beta mitochondrial; PDHE1-B
Gene Symbol	PDHB
Entrez Gene	5162(Human); 68263(Mouse); 289950(Rat)
SwissProt	P11177(Human); Q9D051(Mouse); P49432(Rat)

*AREX continuously optimizes our products. Webpage content may not reflect the latest updates. For inquiries, please contact info@arexbio.com or your local distributor.

*Clone Number, Reactivity, Source/Host and Clonality can be found in the product name and Key Features section above.

DATASHEET**PDHB Rabbit Polyclonal Antibody**

CAT. NO. APA13609

DATA

Western blot analysis of PDHB expression in Hela (A), Jurkat (B), mouse skeletal muscle (C), rat heart (D) whole cell lysates. (Predicted band size: 37; 39 kD; Observed band size: 37 kD)

STORAGE

Store at 4°C short term. For long term storage, store at -20°C, avoiding freeze/thaw cycles.

NOTE

For Research Use Only. Not for diagnostic, therapeutics, prophylactic or in vivo use.