

DATASHEET

LIM Rabbit Polyclonal Antibody

CAT. NO. APA13610

KEY FEATURES

Target	LIM	Source / Host	Rabbit
Reactivity	Human, Mouse, Rat	Clonality	Polyclonal
Applications	WB	Conjugation	Unconjugated
Form / Buffer	Liquid in 0.42% Potassium phosphate, 0.87% Sodium chloride, pH 7.3, 30% glycerol, and 0.01% sodium azide.		Storage at-20°C

BACKGROUND

May play an important role in the heart development by scaffolding PKC to the Z-disk region. May play a role in the regulation of cardiomyocyte expansion. Isoforms lacking the LIM domains may negatively modulate the scaffolding activity of isoform 1. Overexpression promotes the development of heart hypertrophy. Contributes to the regulation of dendritic spine morphogenesis in neurons. May be required to restrain postsynaptic growth of excitatory synapses. Isoform 1, but not isoform 2, expression favors spine thinning and elongation.

APPLICATION

To ensure optimal assay performance, AREX recommends conducting reagent titration tailored to each testing system for optimal detection results.

WB	1:500 - 1:1000
----	----------------

*Results are sample-specific. Please refer to your local assay conditions and test parameters for reference.

PRODUCT OVERVIEW

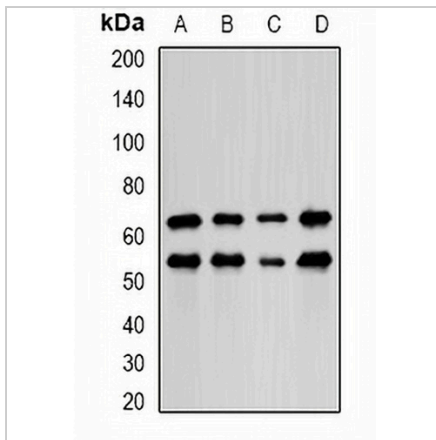
Description	Rabbit polyclonal antibody to LIM
Specificity	Recognizes endogenous levels of LIM protein.
Antibody Type	Primary antibody
Immunogen	Recombinant fusion protein of human LIM
Purification	The antibody was purified by immunogen affinity chromatography.
Molecular Weight	Predicted: 15; Observed: 68; 52 kD
Form/Buffer	Liquid in 0.42% Potassium phosphate, 0.87% Sodium chloride, pH 7.3, 30% glycerol, and 0.01% sodium azide.
Alternative Names	ENH; PDZ and LIM domain protein 5; Enigma homolog; Enigma-like PDZ and LIM domains protein
Gene Symbol	PDLIM5
Entrez Gene	10611(Human); 56376(Mouse); 64353(Rat)
SwissProt	Q96HC4(Human); Q8CI51(Mouse); Q62920(Rat)

*AREX continuously optimizes our products. Webpage content may not reflect the latest updates. For inquiries, please contact info@arexbio.com or your local distributor.

*Clone Number, Reactivity, Source/Host and Clonality can be found in the product name and Key Features section above.

DATASHEET**LIM Rabbit Polyclonal Antibody**

CAT. NO. APA13610

DATA

Western blot analysis of LIM expression in HepG2 (A), MCF7 (B), mouse lung (C), mouse kidney (D) whole cell lysates. (Predicted band size: 15; 23; 25; 52; 53; 63; 67 kD; Observed band size: 68; 52 kD)

STORAGE

Store at 4°C short term. For long term storage, store at -20°C, avoiding freeze/thaw cycles.

NOTE

For Research Use Only. Not for diagnostic, therapeutics, prophylactic or in vivo use.