

DATASHEET

PEX5 Rabbit Polyclonal Antibody

CAT. NO. APA13613

KEY FEATURES

Target	PEX5	Source / Host	Rabbit
Reactivity	Human, Mouse, Rat	Clonality	Polyclonal
Applications	WB, IHC, IF/ICC	Conjugation	Unconjugated
Form / Buffer	Liquid in 0.42% Potassium phosphate, 0.87% Sodium chloride, pH 7.3, 30% glycerol, and 0.01% sodium azide.		Storage at-20°C

BACKGROUND

Receptor that mediates peroxisomal import of proteins containing a C-terminal PTS1-type tripeptide peroxisomal targeting signal (SKL-type) . Binds to cargo proteins containing a PTS1 peroxisomal targeting signal in the cytosol, and translocates them into the peroxisome matrix by passing through the PEX13-PEX14 docking complex along with cargo proteins . PEX5 receptor is then retrotranslocated into the cytosol, leading to release of bound cargo in the peroxisome matrix, and reset for a subsequent peroxisome import cycle .

APPLICATION

To ensure optimal assay performance, AREX recommends conducting reagent titration tailored to each testing system for optimal detection results.

WB	1:500 - 1:2000
IHC	1:50 - 1:200
IF/ICC	1:50 - 1:200

*Results are sample-specific. Please refer to your local assay conditions and test parameters for reference.

PRODUCT OVERVIEW

Description	Rabbit polyclonal antibody to PEX5
Specificity	Recognizes endogenous levels of PEX5 protein.
Antibody Type	Primary antibody
Immunogen	Recombinant fusion protein of human PEX5
Purification	The antibody was purified by immunogen affinity chromatography.
Molecular Weight	Predicted: 66; Observed: 72 kD
Form/Buffer	Liquid in 0.42% Potassium phosphate, 0.87% Sodium chloride, pH 7.3, 30% glycerol, and 0.01% sodium azide.
Alternative Names	PXR1; Peroxisomal targeting signal 1 receptor; PTS1 receptor; PTS1R; PTS1-BP; Peroxin-5; Peroxisomal C-terminal targeting signal import receptor; Peroxisome receptor 1
Gene Symbol	PEX5
Entrez Gene	5830(Human); 19305(Mouse); 312703(Rat)
SwissProt	P50542(Human); O09012(Mouse); Q2M2R8(Rat)

*AREX continuously optimizes our products. Webpage content may not reflect the latest updates. For inquiries, please contact info@arexbio.com or your local distributor.

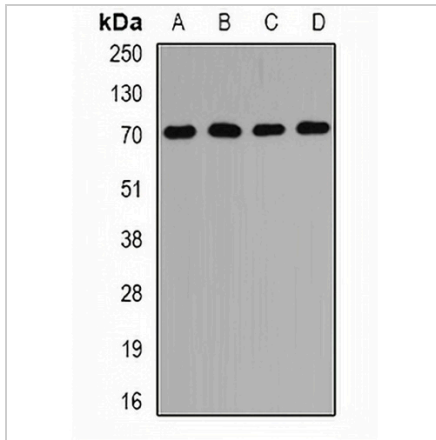
*Clone Number, Reactivity, Source/Host and Clonality can be found in the product name and Key Features section above.

DATASHEET

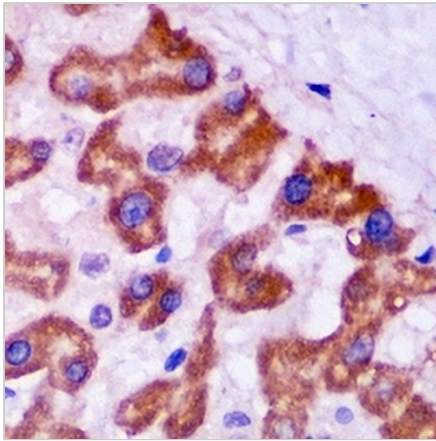
PEX5 Rabbit Polyclonal Antibody

CAT. NO. APA13613

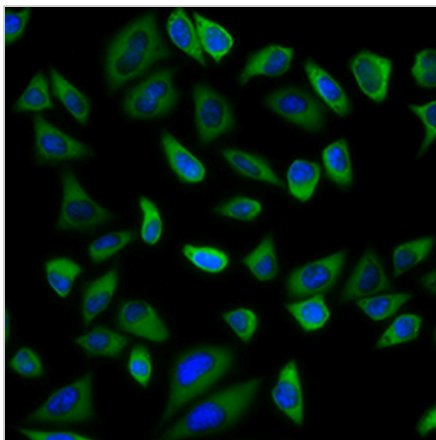
DATA



Western blot analysis of PEX5 expression in MCF7 (A), HeLa (B), mouse liver (C), mouse kidney (D) whole cell lysates. (Predicted band size: 66; 69; 70; 72 kD; Observed band size: 72 kD)



Immunohistochemical analysis of PEX5 staining in human liver cancer formalin fixed paraffin embedded tissue section. The section was pre-treated using heat mediated antigen retrieval with sodium citrate buffer (pH 6.0). The section was then incubated with the antibody at room temperature and detected using an HRP conjugated compact polymer system. DAB was used as the chromogen. The section was then counterstained with haematoxylin and mounted with DPX.



Immunofluorescent analysis of PEX5 staining in HeLa cells. Formalin-fixed cells were permeabilized with 0.1% Triton X-100 in TBS for 5-10 minutes and blocked with 3% BSA-PBS for 30 minutes at room temperature. Cells were probed with the primary antibody in 3% BSA-PBS and incubated overnight at 4 °C in a humidified chamber. Cells were washed with PBST and incubated with a AREX® Fluor 488 -conjugated secondary antibody (green) in PBS at room temperature in the dark. DAPI was used to stain the cell nuclei (blue).

STORAGE

Store at 4°C short term. For long term storage, store at -20°C, avoiding freeze/thaw cycles.

NOTE

For Research Use Only. Not for diagnostic, therapeutics, prophylactic or in vivo use.