

DATASHEET

Profilin 1 Rabbit Polyclonal Antibody

CAT. NO. APA13614

KEY FEATURES

Target	Profilin 1	Source / Host	Rabbit
Reactivity	Human, Mouse, Rat, Monkey	Clonality	Polyclonal
Applications	WB	Conjugation	Unconjugated
Form / Buffer	Liquid in 0.42% Potassium phosphate, 0.87% Sodium chloride, pH 7.3, 30% glycerol, and 0.01% sodium azide.	Storage	at-20°C

BACKGROUND

Binds to actin and affects the structure of the cytoskeleton. At high concentrations, profilin prevents the polymerization of actin, whereas it enhances it at low concentrations. By binding to PIP2, it inhibits the formation of IP3 and DG. Inhibits androgen receptor (AR) and HTT aggregation and binding of G-actin is essential for its inhibition of AR.

APPLICATION

To ensure optimal assay performance, AREX recommends conducting reagent titration tailored to each testing system for optimal detection results.

WB	1:500 - 1:2000
----	----------------

*Results are sample-specific. Please refer to your local assay conditions and test parameters for reference.

PRODUCT OVERVIEW

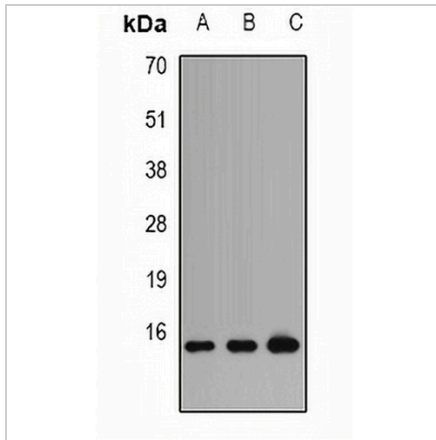
Description	Rabbit polyclonal antibody to Profilin 1
Specificity	Recognizes endogenous levels of Profilin 1 protein.
Antibody Type	Primary antibody
Immunogen	Recombinant fusion protein of human Profilin 1
Purification	The antibody was purified by immunogen affinity chromatography.
Molecular Weight	Predicted: 15 kD; Observed: 15 kD
Form/Buffer	Liquid in 0.42% Potassium phosphate, 0.87% Sodium chloride, pH 7.3, 30% glycerol, and 0.01% sodium azide.
Alternative Names	Profilin-1; Epididymis tissue protein Li 184a; Profilin I
Gene Symbol	PFN1
Entrez Gene	5216(Human); 18643(Mouse); 64303(Rat)
SwissProt	P07737(Human); P62962(Mouse); P62963(Rat)

*AREX continuously optimizes our products. Webpage content may not reflect the latest updates. For inquiries, please contact info@arexbio.com or your local distributor.

*Clone Number, Reactivity, Source/Host and Clonality can be found in the product name and Key Features section above.

DATASHEET**Profilin 1 Rabbit Polyclonal Antibody**

CAT. NO. APA13614

DATA

Western blot analysis of Profilin 1 expression in HT29 (A), PC12 (B), COS7 (C) whole cell lysates. (Predicted band size: 15 kD; Observed band size: 15 kD)

STORAGE

Store at 4°C short term. For long term storage, store at -20°C, avoiding freeze/thaw cycles.

NOTE

For Research Use Only. Not for diagnostic, therapeutics, prophylactic or in vivo use.