

DATASHEET

PLGF Rabbit Polyclonal Antibody

CAT. NO. APA13616

KEY FEATURES

Target	PLGF	Source / Host	Rabbit
Reactivity	Human, Mouse, Rat	Clonality	Polyclonal
Applications	WB, IHC	Conjugation	Unconjugated
Form / Buffer	Liquid in 0.42% Potassium phosphate, 0.87% Sodium chloride, pH 7.3, 30% glycerol, and 0.01% sodium azide.		Storage at -20°C

BACKGROUND

Growth factor active in angiogenesis and endothelial cell growth, stimulating their proliferation and migration. It binds to the receptor FLT1/VEGFR-1. Isoform PIGF-2 binds NRP1/neuropilin-1 and NRP2/neuropilin-2 in a heparin-dependent manner. Also promotes cell tumor growth.

APPLICATION

To ensure optimal assay performance, AREX recommends conducting reagent titration tailored to each testing system for optimal detection results.

WB	1:500 - 1:2000
IHC	1:50 - 1:200

*Results are sample-specific. Please refer to your local assay conditions and test parameters for reference.

PRODUCT OVERVIEW

Description	Rabbit polyclonal antibody to PLGF
Specificity	Recognizes endogenous levels of PLGF protein.
Antibody Type	Primary antibody
Immunogen	Recombinant fusion protein of human PLGF
Purification	The antibody was purified by immunogen affinity chromatography.
Molecular Weight	Predicted: 16; Observed: 16 kD
Form/Buffer	Liquid in 0.42% Potassium phosphate, 0.87% Sodium chloride, pH 7.3, 30% glycerol, and 0.01% sodium azide.
Alternative Names	PGFL; PLGF; Placenta growth factor; PIGF
Gene Symbol	PGF
Entrez Gene	5228(Human); 18654(Mouse); 94203(Rat)
SwissProt	P49763(Human); P49764(Mouse); Q63434(Rat)

*AREX continuously optimizes our products. Webpage content may not reflect the latest updates. For inquiries, please contact info@arexbio.com or your local distributor.

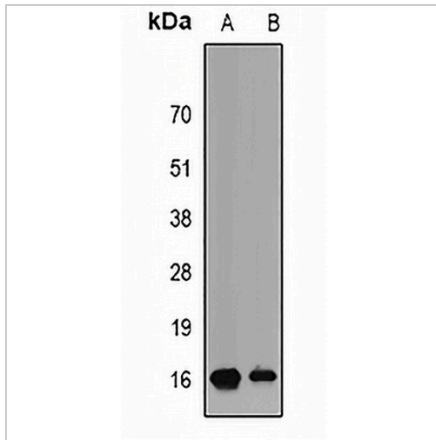
*Clone Number, Reactivity, Source/Host and Clonality can be found in the product name and Key Features section above.

DATASHEET

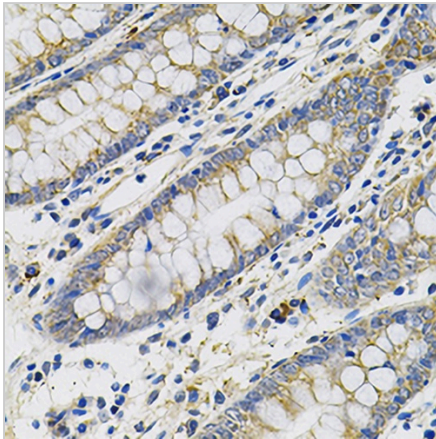
PLGF Rabbit Polyclonal Antibody

CAT. NO. APA13616

DATA



Western blot analysis of PLGF expression in BT474 (A), mouse brain (B) whole cell lysates. (Predicted band size: 16; 19; 24; 27 kD; Observed band size: 16 kD)



Immunohistochemical analysis of PLGF staining in human colon formalin fixed paraffin embedded tissue section. The section was pre-treated using heat mediated antigen retrieval with sodium citrate buffer (pH 6.0). The section was then incubated with the antibody at room temperature and detected using an HRP conjugated compact polymer system. DAB was used as the chromogen. The section was then counterstained with haematoxylin and mounted with DPX.

STORAGE

Store at 4°C short term. For long term storage, store at -20°C, avoiding freeze/thaw cycles.

NOTE

For Research Use Only. Not for diagnostic, therapeutics, prophylactic or in vivo use.