

DATASHEET

PHC3 Rabbit Polyclonal Antibody

CAT. NO. APA13619

KEY FEATURES

Target	PHC3	Source / Host	Rabbit
Reactivity	Human, Mouse	Clonality	Polyclonal
Applications	WB	Conjugation	Unconjugated
Form / Buffer	Liquid in 0.42% Potassium phosphate, 0.87% Sodium chloride, pH 7.3, 30% glycerol, and 0.01% sodium azide.		Storage at -20°C

BACKGROUND

Component of a Polycomb group (PcG) multiprotein PRC1-like complex, a complex class required to maintain the transcriptionally repressive state of many genes, including Hox genes, throughout development. PcG PRC1 complex acts via chromatin remodeling and modification of histones; it mediates monoubiquitination of histone H2A 'Lys-119', rendering chromatin heritably changed in its expressibility.

APPLICATION

To ensure optimal assay performance, AREX recommends conducting reagent titration tailored to each testing system for optimal detection results.

WB	1:500 - 1:1000
----	----------------

*Results are sample-specific. Please refer to your local assay conditions and test parameters for reference.

PRODUCT OVERVIEW

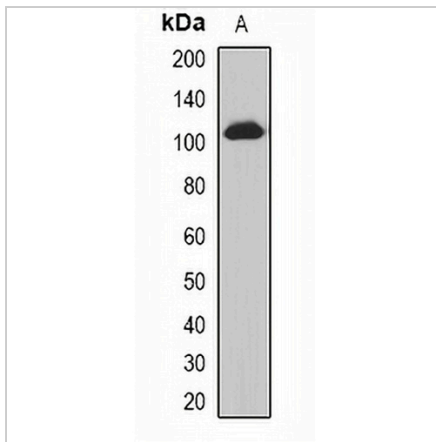
Description	Rabbit polyclonal antibody to PHC3
Specificity	Recognizes endogenous levels of PHC3 protein.
Antibody Type	Primary antibody
Immunogen	Recombinant fusion protein of human PHC3
Purification	The antibody was purified by immunogen affinity chromatography.
Molecular Weight	Predicted: 14; Observed: 106 kD
Form/Buffer	Liquid in 0.42% Potassium phosphate, 0.87% Sodium chloride, pH 7.3, 30% glycerol, and 0.01% sodium azide.
Alternative Names	EDR3; PH3; Polyhomeotic-like protein 3; Early development regulatory protein 3; Homolog of polyhomeotic 3; hPH3
Gene Symbol	PHC3
Entrez Gene	80012(Human); 241915(Mouse)
SwissProt	Q8NDX5(Human); Q8CHP6(Mouse)

*AREX continuously optimizes our products. Webpage content may not reflect the latest updates. For inquiries, please contact info@arexbio.com or your local distributor.

*Clone Number, Reactivity, Source/Host and Clonality can be found in the product name and Key Features section above.

DATASHEET**PHC3 Rabbit Polyclonal Antibody**

CAT. NO. APA13619

DATA

Western blot analysis of PHC3 expression in HeLa (A) whole cell lysates. (Predicted band size: 14; 16; 19; 35; 104; 106; 107 kD; Observed band size: 106 kD)

STORAGE

Store at 4°C short term. For long term storage, store at -20°C, avoiding freeze/thaw cycles.

NOTE

For Research Use Only. Not for diagnostic, therapeutics, prophylactic or in vivo use.