

DATASHEET

PITRM1 Rabbit Polyclonal Antibody

CAT. NO. APA13621

KEY FEATURES

Target	PITRM1	Source / Host	Rabbit
Reactivity	Human, Mouse, Rat	Clonality	Polyclonal
Applications	WB, IF/ICC	Conjugation	Unconjugated
Form / Buffer	Liquid in 0.42% Potassium phosphate, 0.87% Sodium chloride, pH 7.3, 30% glycerol, and 0.01% sodium azide.		Storage at -20°C

BACKGROUND

Metalloendopeptidase of the mitochondrial matrix that functions in peptide cleavage and degradation rather than in protein processing. Has an ATP-independent activity. Specifically cleaves peptides in the range of 5 to 65 residues. Shows a preference for cleavage after small polar residues and before basic residues, but without any positional preference. Degrades the transit peptides of mitochondrial proteins after their cleavage. Also degrades other unstructured peptides. It is also able to degrade amyloid-beta protein 40, one of the peptides produced by APP processing, when it accumulates in mitochondrion. It is a highly efficient protease, at least toward amyloid-beta protein 40.

APPLICATION

To ensure optimal assay performance, AREX recommends conducting reagent titration tailored to each testing system for optimal detection results.

WB	1:500 - 1:1000
IF/ICC	1:50 - 1:200

*Results are sample-specific. Please refer to your local assay conditions and test parameters for reference.

PRODUCT OVERVIEW

Description	Rabbit polyclonal antibody to PITRM1
Specificity	Recognizes endogenous levels of PITRM1 protein.
Antibody Type	Primary antibody
Immunogen	Recombinant fusion protein of human PITRM1
Purification	The antibody was purified by immunogen affinity chromatography.
Molecular Weight	Predicted: 106; Observed: 117 kD
Form/Buffer	Liquid in 0.42% Potassium phosphate, 0.87% Sodium chloride, pH 7.3, 30% glycerol, and 0.01% sodium azide.
Alternative Names	KIAA1104; MP1; Presequence protease mitochondrial; hPreP; Pitriysin metalloproteinase 1; Metalloprotease 1; hMP1
Gene Symbol	PITRM1
Entrez Gene	10531(Human); 69617(Mouse)
SwissProt	Q5JRX3(Human); Q8K411(Mouse)

*AREX continuously optimizes our products. Webpage content may not reflect the latest updates. For inquiries, please contact info@arexbio.com or your local distributor.

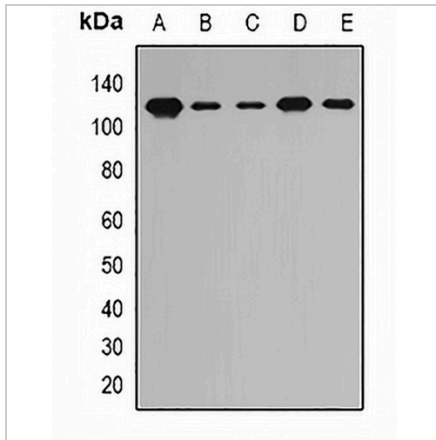
*Clone Number, Reactivity, Source/Host and Clonality can be found in the product name and Key Features section above.

DATASHEET

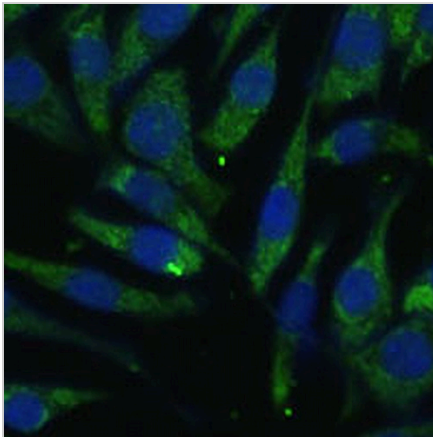
PITRM1 Rabbit Polyclonal Antibody

CAT. NO. APA13621

DATA



Western blot analysis of PITRM1 expression in A549 (A), MCF7 (B), mouse liver (C), mouse kidney (D), rat heart (E) whole cell lysates. (Predicted band size: 106; 117 kD; Observed band size: 117 kD)



Immunofluorescent analysis of PITRM1 staining in L929 cells. Formalin-fixed cells were permeabilized with 0.1% Triton X-100 in TBS for 5-10 minutes and blocked with 3% BSA-PBS for 30 minutes at room temperature. Cells were probed with the primary antibody in 3% BSA-PBS and incubated overnight at 4 °C in a humidified chamber. Cells were washed with PBST and incubated with a AREX® Fluor 488 -conjugated secondary antibody (green) in PBS at room temperature in the dark. DAPI was used to stain the cell nuclei (blue).

STORAGE

Store at 4°C short term. For long term storage, store at -20°C, avoiding freeze/thaw cycles.

NOTE

For Research Use Only. Not for diagnostic, therapeutics, prophylactic or in vivo use.