

DATASHEET

tPA Rabbit Polyclonal Antibody

CAT. NO. APA13622

KEY FEATURES

| | | | |
|---------------|---|---------------|---------------------|
| Target | tPA | Source / Host | Rabbit |
| Reactivity | Human, Mouse, Rat | Clonality | Polyclonal |
| Applications | WB | Conjugation | Unconjugated |
| Form / Buffer | Liquid in 0.42% Potassium phosphate, 0.87% Sodium chloride, pH 7.3, 30% glycerol, and 0.01% sodium azide. | | Storage at -20°C |

BACKGROUND

Converts the abundant, but inactive, zymogen plasminogen to plasmin by hydrolyzing a single Arg-Val bond in plasminogen. By controlling plasmin-mediated proteolysis, it plays an important role in tissue remodeling and degradation, in cell migration and many other physiopathological events. During oocyte activation, plays a role in cortical granule reaction in the zona reaction, which contributes to the block to polyspermy .

APPLICATION

To ensure optimal assay performance, AREX recommends conducting reagent titration tailored to each testing system for optimal detection results.

| | |
|----|----------------|
| WB | 1:500 - 1:2000 |
|----|----------------|

*Results are sample-specific. Please refer to your local assay conditions and test parameters for reference.

PRODUCT OVERVIEW

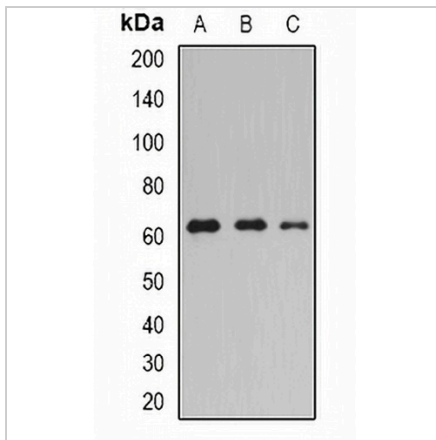
| | |
|-------------------|---|
| Description | Rabbit polyclonal antibody to tPA |
| Specificity | Recognizes endogenous levels of tPA protein. |
| Antibody Type | Primary antibody |
| Immunogen | Recombinant fusion protein of human tPA |
| Purification | The antibody was purified by immunogen affinity chromatography. |
| Molecular Weight | Predicted: 32; Observed: 63 kD |
| Form/Buffer | Liquid in 0.42% Potassium phosphate, 0.87% Sodium chloride, pH 7.3, 30% glycerol, and 0.01% sodium azide. |
| Alternative Names | Tissue-type plasminogen activator; t-PA; t-plasminogen activator; tPA; Alteplase; Reteplase |
| Gene Symbol | PLAT |
| Entrez Gene | 5327(Human); 18791(Mouse); 25692(Rat) |
| SwissProt | P00750(Human); P11214(Mouse); P19637(Rat) |

*AREX continuously optimizes our products. Webpage content may not reflect the latest updates. For inquiries, please contact info@arexbio.com or your local distributor.

*Clone Number, Reactivity, Source/Host and Clonality can be found in the product name and Key Features section above.

DATASHEET**tPA Rabbit Polyclonal Antibody**

CAT. NO. APA13622

DATA

Western blot analysis of tPA expression in SW480 (A), SKOV3 (B), A431 (C) whole cell lysates. (Predicted band size: 32; 44; 57; 62 kD; Observed band size: 63 kD)

STORAGE

Store at 4°C short term. For long term storage, store at -20°C, avoiding freeze/thaw cycles.

NOTE

For Research Use Only. Not for diagnostic, therapeutics, prophylactic or in vivo use.