

**DATASHEET**

**PLTP Rabbit Polyclonal Antibody**

CAT. NO. APA13623

**KEY FEATURES**

Target	PLTP	Source / Host	Rabbit
Reactivity	Human, Rat	Clonality	Polyclonal
Applications	WB	Conjugation	Unconjugated
Form / Buffer	Liquid in 0.42% Potassium phosphate, 0.87% Sodium chloride, pH 7.3, 30% glycerol, and 0.01% sodium azide.		Storage at-20°C

**BACKGROUND**

Mediates the transfer of phospholipids and free cholesterol from triglyceride-rich lipoproteins (low density lipoproteins or LDL and very low density lipoproteins or VLDL) into high-density lipoproteins (HDL) as well as the exchange of phospholipids between triglyceride-rich lipoproteins themselves into high-density lipoproteins (HDL) as well as the exchange of phospholipids between triglyceride-rich lipoproteins themselves . Facilitates the transfer of a spectrum of different lipid molecules, including diacylglycerol, phosphatidic acid, sphingomyelin, phosphatidylcholine, phosphatidylinositol, phosphatidylglycerol, cerebroside and phosphatidyl ethanolamine . Plays an important role in HDL remodeling which involves modulating the size and composition of HDL .

**APPLICATION**

To ensure optimal assay performance, AREX recommends conducting reagent titration tailored to each testing system for optimal detection results.

WB	1:500 - 1:2000
----	----------------

\*Results are sample-specific. Please refer to your local assay conditions and test parameters for reference.

**PRODUCT OVERVIEW**

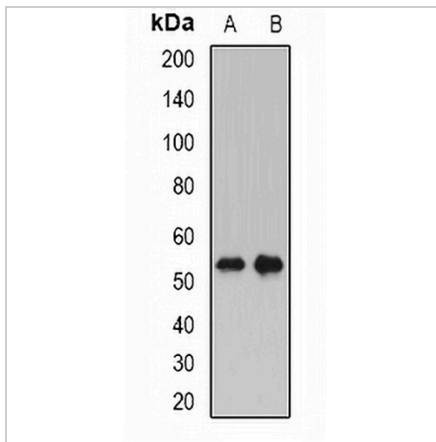
Description	Rabbit polyclonal antibody to PLTP
Specificity	Recognizes endogenous levels of PLTP protein.
Antibody Type	Primary antibody
Immunogen	Recombinant fusion protein of human PLTP
Purification	The antibody was purified by immunogen affinity chromatography.
Molecular Weight	Predicted: 44; Observed: 54 kD
Form/Buffer	Liquid in 0.42% Potassium phosphate, 0.87% Sodium chloride, pH 7.3, 30% glycerol, and 0.01% sodium azide.
Alternative Names	Phospholipid transfer protein; Lipid transfer protein II
Gene Symbol	PLTP
Entrez Gene	5360(Human)
SwissProt	P55058(Human)

\*AREX continuously optimizes our products. Webpage content may not reflect the latest updates. For inquiries, please contact [info@arexbio.com](mailto:info@arexbio.com) or your local distributor.

\*Clone Number, Reactivity, Source/Host and Clonality can be found in the product name and Key Features section above.

**DATASHEET****PLTP Rabbit Polyclonal Antibody**

CAT. NO. APA13623

**DATA**

Western blot analysis of PLTP expression in HEK293T (A), SW620 (B) whole cell lysates.  
(Predicted band size: 44; 49; 54 kD; Observed band size: 54 kD)

**STORAGE**

Store at 4°C short term. For long term storage, store at -20°C, avoiding freeze/thaw cycles.

**NOTE**

For Research Use Only. Not for diagnostic, therapeutics, prophylactic or in vivo use.