

DATASHEET

POLR1D Rabbit Polyclonal Antibody

CAT. NO. APA13626

KEY FEATURES

Target	POLR1D	Source / Host	Rabbit
Reactivity	Human, Mouse, Rat	Clonality	Polyclonal
Applications	WB, IF/ICC	Conjugation	Unconjugated
Form / Buffer	Liquid in 0.42% Potassium phosphate, 0.87% Sodium chloride, pH 7.3, 30% glycerol, and 0.01% sodium azide.	Storage	at-20°C

BACKGROUND

DNA-dependent RNA polymerase catalyzes the transcription of DNA into RNA using the four ribonucleoside triphosphates as substrates. Common component of RNA polymerases I and III which synthesize ribosomal RNA precursors and short non-coding RNAs including 5S rRNA, snRNAs, tRNAs and miRNAs, respectively.

APPLICATION

To ensure optimal assay performance, AREX recommends conducting reagent titration tailored to each testing system for optimal detection results.

WB	1:500 - 1:2000
IF/ICC	1:50 - 1:100

*Results are sample-specific. Please refer to your local assay conditions and test parameters for reference.

PRODUCT OVERVIEW

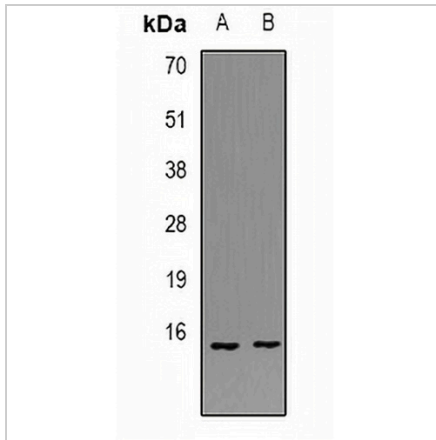
Description	Rabbit polyclonal antibody to POLR1D
Specificity	Recognizes endogenous levels of POLR1D protein.
Antibody Type	Primary antibody
Immunogen	Recombinant fusion protein of human POLR1D
Purification	The antibody was purified by immunogen affinity chromatography.
Molecular Weight	Predicted: 14; Observed: 15 kD
Form/Buffer	Liquid in 0.42% Potassium phosphate, 0.87% Sodium chloride, pH 7.3, 30% glycerol, and 0.01% sodium azide.
Alternative Names	DNA-directed RNA polymerases I and III subunit RPAC2; RNA polymerases I and III subunit AC2; AC19; DNA-directed RNA polymerase I subunit D; RNA polymerase I 16 kDa subunit; RPA16; RPC16; hRPA19
Gene Symbol	POLR1D
Entrez Gene	51082(Human); 20018(Mouse)
SwissProt	Q9Y2S0(Human); P97304(Mouse)

*AREX continuously optimizes our products. Webpage content may not reflect the latest updates. For inquiries, please contact info@arexbio.com or your local distributor.

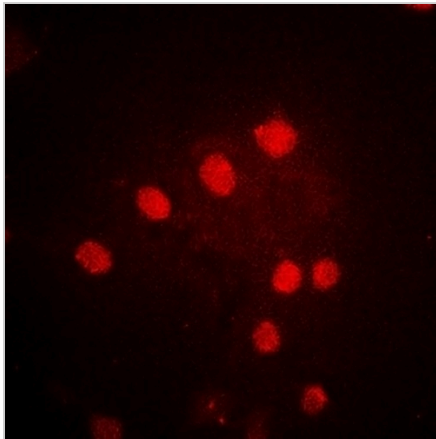
*Clone Number, Reactivity, Source/Host and Clonality can be found in the product name and Key Features section above.

DATASHEET**POLR1D Rabbit Polyclonal Antibody**

CAT. NO. APA13626

DATA

Western blot analysis of POLR1D expression in MCF7 (A), A549 (B) whole cell lysates. (Predicted band size: 14; 15 kD; Observed band size: 15 kD)



Immunofluorescent analysis of POLR1D staining in MCF7 cells. Formalin-fixed cells were permeabilized with 0.1% Triton X-100 in TBS for 5-10 minutes and blocked with 3% BSA-PBS for 30 minutes at room temperature. Cells were probed with the primary antibody in 3% BSA-PBS and incubated overnight at 4 °C in a humidified chamber. Cells were washed with PBST and incubated with a DyLight 594-conjugated secondary antibody (red) in PBS at room temperature in the dark.

STORAGE

Store at 4°C short term. For long term storage, store at -20°C, avoiding freeze/thaw cycles.

NOTE

For Research Use Only. Not for diagnostic, therapeutics, prophylactic or in vivo use.