

DATASHEET

POLR2C Rabbit Polyclonal Antibody

CAT. NO. APA13627

KEY FEATURES

Target	POLR2C	Source / Host	Rabbit
Reactivity	Human, Mouse, Rat	Clonality	Polyclonal
Applications	WB, IP	Conjugation	Unconjugated
Form / Buffer	Liquid in 0.42% Potassium phosphate, 0.87% Sodium chloride, pH 7.3, 30% glycerol, and 0.01% sodium azide.		Storage at -20°C

BACKGROUND

Core component of RNA polymerase II (Pol II), a DNA-dependent RNA polymerase which synthesizes mRNA precursors and many functional non-coding RNAs using the four ribonucleoside triphosphates as substrates.

APPLICATION

To ensure optimal assay performance, AREX recommends conducting reagent titration tailored to each testing system for optimal detection results.

WB	1:500 - 1:1000
IP	1:10 - 1:50

*Results are sample-specific. Please refer to your local assay conditions and test parameters for reference.

PRODUCT OVERVIEW

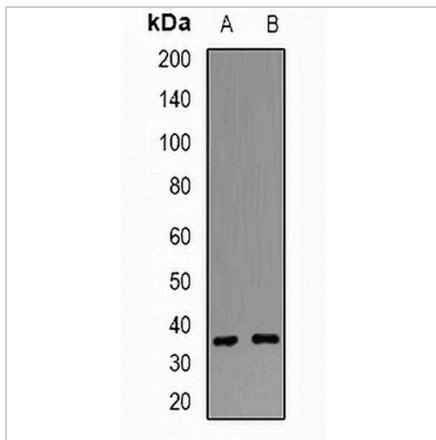
Description	Rabbit polyclonal antibody to POLR2C
Specificity	Recognizes endogenous levels of POLR2C protein.
Antibody Type	Primary antibody
Immunogen	Recombinant fusion protein of human POLR2C
Purification	The antibody was purified by immunogen affinity chromatography.
Molecular Weight	Predicted: 31 kD; Observed: 38 kD
Form/Buffer	Liquid in 0.42% Potassium phosphate, 0.87% Sodium chloride, pH 7.3, 30% glycerol, and 0.01% sodium azide.
Alternative Names	DNA-directed RNA polymerase II subunit RPB3; RNA polymerase II subunit 3; RNA polymerase II subunit B3; DNA-directed RNA polymerase II 33 kDa polypeptide; RPB33; DNA-directed RNA polymerase II subunit C; RPB31
Gene Symbol	POLR2C
Entrez Gene	5432(Human)
SwissProt	P19387(Human); P97760(Mouse)

*AREX continuously optimizes our products. Webpage content may not reflect the latest updates. For inquiries, please contact info@arexbio.com or your local distributor.

*Clone Number, Reactivity, Source/Host and Clonality can be found in the product name and Key Features section above.

DATASHEET**POLR2C Rabbit Polyclonal Antibody**

CAT. NO. APA13627

DATA

Western blot analysis of POLR2C expression in SW620 (A), mouse spleen (B) whole cell lysates. (Predicted band size: 31 kD; Observed band size: 38 kD)

STORAGE

Store at 4°C short term. For long term storage, store at -20°C, avoiding freeze/thaw cycles.

NOTE

For Research Use Only. Not for diagnostic, therapeutics, prophylactic or in vivo use.