

DATASHEET

POMC Rabbit Polyclonal Antibody

CAT. NO. APA13629

KEY FEATURES

Target	POMC	Source / Host	Rabbit
Reactivity	Human, Mouse, Rat	Clonality	Polyclonal
Applications	WB	Conjugation	Unconjugated
Form / Buffer	Liquid in 0.42% Potassium phosphate, 0.87% Sodium chloride, pH 7.3, 30% glycerol, and 0.01% sodium azide.		Storage at -20°C

BACKGROUND

Precursor protein of pituitary hormones that are involved in diverse physiological processes, including the regulation of energy balance, stress response, immune function and skin pigmentation.

APPLICATION

To ensure optimal assay performance, AREX recommends conducting reagent titration tailored to each testing system for optimal detection results.

WB	1:500 - 1:2000
----	----------------

*Results are sample-specific. Please refer to your local assay conditions and test parameters for reference.

PRODUCT OVERVIEW

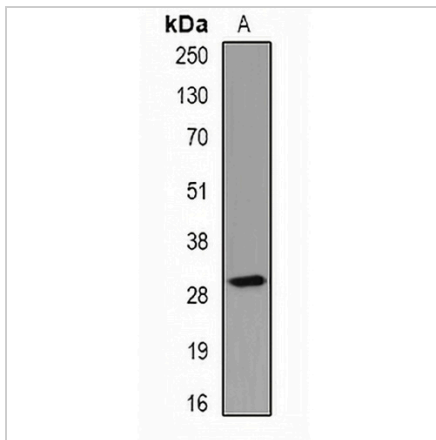
Description	Rabbit polyclonal antibody to POMC
Specificity	Recognizes endogenous levels of POMC protein.
Antibody Type	Primary antibody
Immunogen	KLH-conjugated synthetic peptide of human POMC
Purification	The antibody was purified by immunogen affinity chromatography.
Molecular Weight	Predicted: 29 kD; Observed: 29 kD
Form/Buffer	Liquid in 0.42% Potassium phosphate, 0.87% Sodium chloride, pH 7.3, 30% glycerol, and 0.01% sodium azide.
Alternative Names	Pro-opiomelanocortin; POMC; Corticotropin-lipotropin
Gene Symbol	POMC
Entrez Gene	5443(Human); 18976(Mouse)
SwissProt	P01189(Human); P01193(Mouse); P01194(Rat)

*AREX continuously optimizes our products. Webpage content may not reflect the latest updates. For inquiries, please contact info@arexbio.com or your local distributor.

*Clone Number, Reactivity, Source/Host and Clonality can be found in the product name and Key Features section above.

DATASHEET**POMC Rabbit Polyclonal Antibody**

CAT. NO. APA13629

DATA

Western blot analysis of POMC expression in HepG2 (A) whole cell lysates. (Predicted band size: 29 kD; Observed band size: 29 kD)

STORAGE

Store at 4°C short term. For long term storage, store at -20°C, avoiding freeze/thaw cycles.

NOTE

For Research Use Only. Not for diagnostic, therapeutics, prophylactic or in vivo use.