

DATASHEET

BOB1 Rabbit Polyclonal Antibody

CAT. NO. APA13633

KEY FEATURES

Target	BOB1	Source / Host	Rabbit
Reactivity	Human, Mouse, Rat	Clonality	Polyclonal
Applications	WB	Conjugation	Unconjugated
Form / Buffer	Liquid in 0.42% Potassium phosphate, 0.87% Sodium chloride, pH 7.3, 30% glycerol, and 0.01% sodium azide.		Storage at -20°C

BACKGROUND

Transcriptional coactivator that specifically associates with either POU2F1/OCT1 or POU2F2/OCT2 . It boosts the POU2F1/OCT1 mediated promoter activity and to a lesser extent, that of POU2F2/OCT2 . It recognizes the POU domains of POU2F1/OCT1 and POU2F2/OCT2 . It is essential for the response of B-cells to antigens and required for the formation of germinal centers . Regulates IL6 expression in B cells as POU2F2/OCT2 coactivator .

APPLICATION

To ensure optimal assay performance, AREX recommends conducting reagent titration tailored to each testing system for optimal detection results.

WB	1:500 - 1:1000
----	----------------

*Results are sample-specific. Please refer to your local assay conditions and test parameters for reference.

PRODUCT OVERVIEW

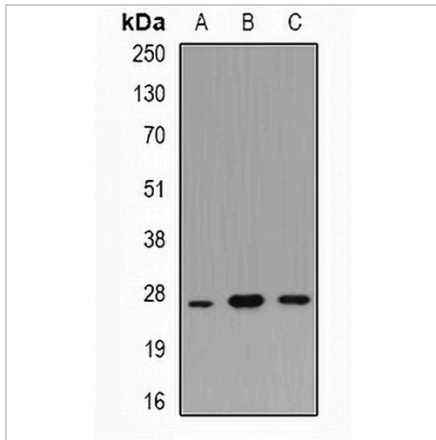
Description	Rabbit polyclonal antibody to BOB1
Specificity	Recognizes endogenous levels of BOB1 protein.
Antibody Type	Primary antibody
Immunogen	Recombinant fusion protein of human BOB1
Purification	The antibody was purified by immunogen affinity chromatography.
Molecular Weight	Predicted: 27 kD; Observed: 27 kD
Form/Buffer	Liquid in 0.42% Potassium phosphate, 0.87% Sodium chloride, pH 7.3, 30% glycerol, and 0.01% sodium azide.
Alternative Names	OBF1; POU domain class 2-associating factor 1; B-cell-specific coactivator OBF-1; BOB-1; OCA-B; OCT-binding factor 1
Gene Symbol	POU2AF1
Entrez Gene	5450(Human)
SwissProt	Q16633(Human)

*AREX continuously optimizes our products. Webpage content may not reflect the latest updates. For inquiries, please contact info@arexbio.com or your local distributor.

*Clone Number, Reactivity, Source/Host and Clonality can be found in the product name and Key Features section above.

DATASHEET**BOB1 Rabbit Polyclonal Antibody**

CAT. NO. APA13633

DATA

Western blot analysis of BOB1 expression in HT29 (A), mouse spleen (B), rat thymus (C) whole cell lysates. (Predicted band size: 27 kD; Observed band size: 27 kD)

STORAGE

Store at 4°C short term. For long term storage, store at -20°C, avoiding freeze/thaw cycles.

NOTE

For Research Use Only. Not for diagnostic, therapeutics, prophylactic or in vivo use.