

**DATASHEET**

**Cyclophilin B Rabbit Polyclonal Antibody**

CAT. NO. APA13635

**KEY FEATURES**

Target	Cyclophilin B	Source / Host	Rabbit
Reactivity	Human, Mouse, Rat	Clonality	Polyclonal
Applications	WB	Conjugation	Unconjugated
Form / Buffer	Liquid in 0.42% Potassium phosphate, 0.87% Sodium chloride, pH 7.3, 30% glycerol, and 0.01% sodium azide.		Storage at -20°C

**BACKGROUND**

PPIase that catalyzes the cis-trans isomerization of proline imidic peptide bonds in oligopeptides and may therefore assist protein folding.

**APPLICATION**

To ensure optimal assay performance, AREX recommends conducting reagent titration tailored to each testing system for optimal detection results.

WB	1:500 - 1:2000
----	----------------

\*Results are sample-specific. Please refer to your local assay conditions and test parameters for reference.

**PRODUCT OVERVIEW**

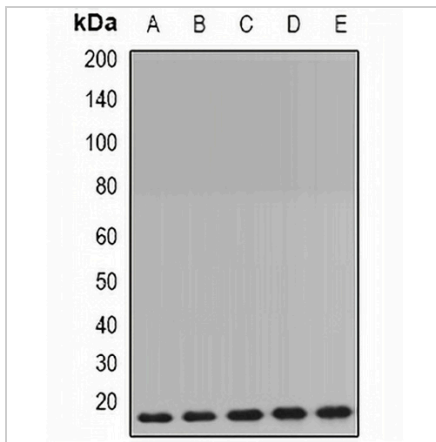
Description	Rabbit polyclonal antibody to Cyclophilin B
Specificity	Recognizes endogenous levels of Cyclophilin B protein.
Antibody Type	Primary antibody
Immunogen	Recombinant fusion protein of human Cyclophilin B
Purification	The antibody was purified by immunogen affinity chromatography.
Molecular Weight	Predicted: 23 kD; Observed: 19 kD
Form/Buffer	Liquid in 0.42% Potassium phosphate, 0.87% Sodium chloride, pH 7.3, 30% glycerol, and 0.01% sodium azide.
Alternative Names	CYPB; Peptidyl-prolyl cis-trans isomerase B; PPIase B; CYP-S1; Cyclophilin B; Rotamase B; S-cyclophilin; SCYLP
Gene Symbol	PPIB
Entrez Gene	5479(Human); 19035(Mouse); 64367(Rat)
SwissProt	P23284(Human); P24369(Mouse); P24368(Rat)

\*AREX continuously optimizes our products. Webpage content may not reflect the latest updates. For inquiries, please contact [info@arexbio.com](mailto:info@arexbio.com) or your local distributor.

\*Clone Number, Reactivity, Source/Host and Clonality can be found in the product name and Key Features section above.

**DATASHEET****Cyclophilin B Rabbit Polyclonal Antibody**

CAT. NO. APA13635

**DATA**

Western blot analysis of Cyclophilin B expression in MCF7 (A), HepG2 (B), mouse brain (C), mouse lung (D), rat liver (E) whole cell lysates. (Predicted band size: 23 kD; Observed band size: 19 kD)

**STORAGE**

Store at 4°C short term. For long term storage, store at -20°C, avoiding freeze/thaw cycles.

**NOTE**

For Research Use Only. Not for diagnostic, therapeutics, prophylactic or in vivo use.