

DATASHEET
PPP2R1A Rabbit Polyclonal Antibody
CAT. NO. APA13637
KEY FEATURES

Target	PPP2R1A	Source / Host	Rabbit
Reactivity	Human, Mouse	Clonality	Polyclonal
Applications	WB, IF/ICC	Conjugation	Unconjugated
Form / Buffer	Liquid in 0.42% Potassium phosphate, 0.87% Sodium chloride, pH 7.3, 30% glycerol, and 0.01% sodium azide.		Storage at -20°C

BACKGROUND

The PR65 subunit of protein phosphatase 2A serves as a scaffolding molecule to coordinate the assembly of the catalytic subunit and a variable regulatory B subunit. Upon interaction with GNA12 promotes dephosphorylation of microtubule associated protein TAU/MAPT. Required for proper chromosome segregation and for centromeric localization of SGO1 in mitosis. Together with RACK1 adapter, mediates dephosphorylation of AKT1 at 'Ser-473', preventing AKT1 activation and AKT-mTOR signaling pathway. Dephosphorylation of AKT1 is essential for regulatory T-cells (Treg) homeostasis and stability. Part of the striatin-interacting phosphatase and kinase (STRIPAK) complexes.

APPLICATION

To ensure optimal assay performance, AREX recommends conducting reagent titration tailored to each testing system for optimal detection results.

WB	1:500 - 1:2000
IF/ICC	1:50 - 1:200

*Results are sample-specific. Please refer to your local assay conditions and test parameters for reference.

PRODUCT OVERVIEW

Description	Rabbit polyclonal antibody to PPP2R1A
Specificity	Recognizes endogenous levels of PPP2R1A protein.
Antibody Type	Primary antibody
Immunogen	Recombinant fusion protein of human PPP2R1A
Purification	The antibody was purified by immunogen affinity chromatography.
Molecular Weight	Predicted: 65 kD; Observed: 65 kD
Form/Buffer	Liquid in 0.42% Potassium phosphate, 0.87% Sodium chloride, pH 7.3, 30% glycerol, and 0.01% sodium azide.
Alternative Names	Serine/threonine-protein phosphatase 2A 65 kDa regulatory subunit A alpha isoform; Medium tumor antigen-associated 61 kDa protein; PP2A subunit A isoform PR65-alpha; PP2A subunit A isoform R1-alpha
Gene Symbol	PPP2R1A
Entrez Gene	5518(Human); 51792(Mouse)
SwissProt	P30153(Human); Q76MZ3(Mouse)

*AREX continuously optimizes our products. Webpage content may not reflect the latest updates. For inquiries, please contact info@arex.bio or your local distributor.

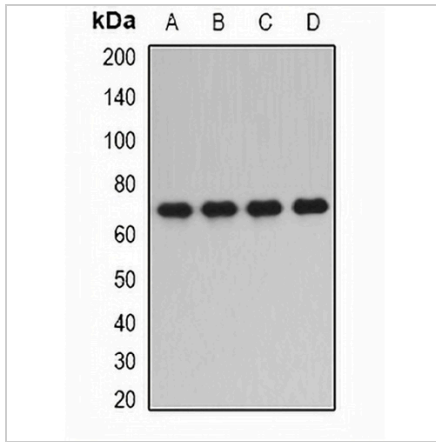
*Clone Number, Reactivity, Source/Host and Clonality can be found in the product name and Key Features section above.

DATASHEET

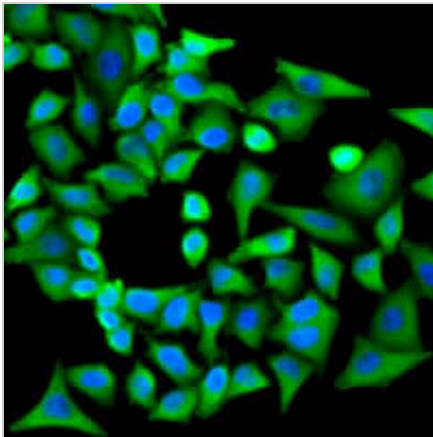
PPP2R1A Rabbit Polyclonal Antibody

CAT. NO. APA13637

DATA



Western blot analysis of PPP2R1A expression in SKOV3 (A), HepG2 (B), mouse brain (C), mouse kidney (D) whole cell lysates. (Predicted band size: 65 kD; Observed band size: 65 kD)



Immunofluorescent analysis of PPP2R1A staining in U2OS cells. Formalin-fixed cells were permeabilized with 0.1% Triton X-100 in TBS for 5-10 minutes and blocked with 3% BSA-PBS for 30 minutes at room temperature. Cells were probed with the primary antibody in 3% BSA-PBS and incubated overnight at 4 °C in a humidified chamber. Cells were washed with PBST and incubated with a AREX® Fluor 488 -conjugated secondary antibody (green) in PBS at room temperature in the dark. DAPI was used to stain the cell nuclei (blue).

STORAGE

Store at 4°C short term. For long term storage, store at -20°C, avoiding freeze/thaw cycles.

NOTE

For Research Use Only. Not for diagnostic, therapeutics, prophylactic or in vivo use.