

DATASHEET

CALNA3 Rabbit Polyclonal Antibody

CAT. NO. APA13640

KEY FEATURES

Target	CALNA3	Source / Host	Rabbit
Reactivity	Human, Mouse	Clonality	Polyclonal
Applications	WB	Conjugation	Unconjugated
Form / Buffer	Liquid in 0.42% Potassium phosphate, 0.87% Sodium chloride, pH 7.3, 30% glycerol, and 0.01% sodium azide.		Storage at-20°C

BACKGROUND

Calcium-dependent, calmodulin-stimulated protein phosphatase which plays an essential role in the transduction of intracellular Ca(2+)-mediated signals. Dephosphorylates and activates transcription factor NFATC1. Dephosphorylates and inactivates transcription factor ELK1. Dephosphorylates DARPP32.

APPLICATION

To ensure optimal assay performance, AREX recommends conducting reagent titration tailored to each testing system for optimal detection results.

WB	1:500 - 1:2000
----	----------------

*Results are sample-specific. Please refer to your local assay conditions and test parameters for reference.

PRODUCT OVERVIEW

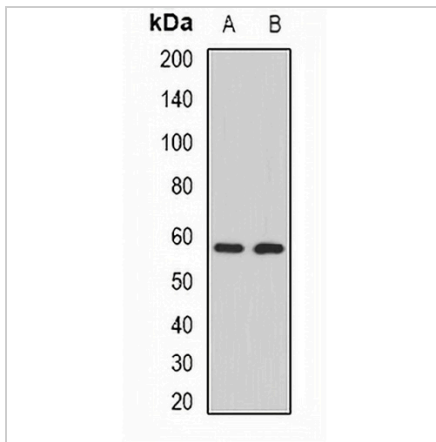
Description	Rabbit polyclonal antibody to CALNA3
Specificity	Recognizes endogenous levels of CALNA3 protein.
Antibody Type	Primary antibody
Immunogen	Recombinant fusion protein of human CALNA3
Purification	The antibody was purified by immunogen affinity chromatography.
Molecular Weight	Predicted: 57; Observed: 58 kD
Form/Buffer	Liquid in 0.42% Potassium phosphate, 0.87% Sodium chloride, pH 7.3, 30% glycerol, and 0.01% sodium azide.
Alternative Names	CALNA3; CNA3; Serine/threonine-protein phosphatase 2B catalytic subunit gamma isoform; CAM-PRP catalytic subunit; Calcineurin, testis-specific catalytic subunit; Calmodulin-dependent calcineurin A subunit gamma isoform
Gene Symbol	PPP3CC
Entrez Gene	5533(Human); 19057(Mouse)
SwissProt	P48454(Human); P48455(Mouse)

*AREX continuously optimizes our products. Webpage content may not reflect the latest updates. For inquiries, please contact info@arexbio.com or your local distributor.

*Clone Number, Reactivity, Source/Host and Clonality can be found in the product name and Key Features section above.

DATASHEET**CALNA3 Rabbit Polyclonal Antibody**

CAT. NO. APA13640

DATA

Western blot analysis of CALNA3 expression in mouse testis (A), rat brain (B) whole cell lysates. (Predicted band size: 57; 58; 59 kD; Observed band size: 58 kD)

STORAGE

Store at 4°C short term. For long term storage, store at -20°C, avoiding freeze/thaw cycles.

NOTE

For Research Use Only. Not for diagnostic, therapeutics, prophylactic or in vivo use.