

DATASHEET

PPP3R2 Rabbit Polyclonal Antibody

CAT. NO. APA13641

KEY FEATURES

Target	PPP3R2	Source / Host	Rabbit
Reactivity	Human, Mouse	Clonality	Polyclonal
Applications	WB	Conjugation	Unconjugated
Form / Buffer	Liquid in 0.42% Potassium phosphate, 0.87% Sodium chloride, pH 7.3, 30% glycerol, and 0.01% sodium azide.		Storage at -20°C

BACKGROUND

Regulatory subunit of calcineurin, a calcium-dependent, calmodulin stimulated protein phosphatase. Confers calcium sensitivity.

APPLICATION

To ensure optimal assay performance, AREX recommends conducting reagent titration tailored to each testing system for optimal detection results.

WB	1:500 - 1:2000
----	----------------

*Results are sample-specific. Please refer to your local assay conditions and test parameters for reference.

PRODUCT OVERVIEW

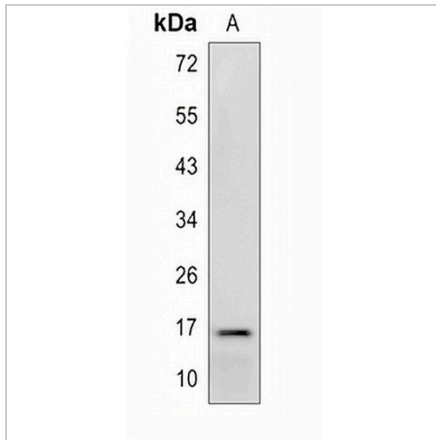
Description	Rabbit polyclonal antibody to PPP3R2
Specificity	Recognizes endogenous levels of PPP3R2 protein.
Antibody Type	Primary antibody
Immunogen	Recombinant fusion protein of human PPP3R2
Purification	The antibody was purified by immunogen affinity chromatography.
Molecular Weight	Predicted: 19 kD; Observed: 16 kD
Form/Buffer	Liquid in 0.42% Potassium phosphate, 0.87% Sodium chloride, pH 7.3, 30% glycerol, and 0.01% sodium azide.
Alternative Names	CBLP; PPP3RL; Calcineurin subunit B type 2; Calcineurin B-like protein; CBLP; Calcineurin BII; CNBII; PPP3R1-like; Protein phosphatase 2B regulatory subunit 2; Protein phosphatase 3 regulatory subunit B beta isoform
Gene Symbol	PPP3R2
Entrez Gene	5535(Human); 19059(Mouse)
SwissProt	Q96LZ3(Human); Q63811(Mouse)

*AREX continuously optimizes our products. Webpage content may not reflect the latest updates. For inquiries, please contact info@arexbio.com or your local distributor.

*Clone Number, Reactivity, Source/Host and Clonality can be found in the product name and Key Features section above.

DATASHEET**PPP3R2 Rabbit Polyclonal Antibody**

CAT. NO. APA13641

DATA

Western blot analysis of PPP3R2 expression in mouse brain (A) whole cell lysates.
(Predicted band size: 19 kD; Observed band size: 16 kD)

STORAGE

Store at 4°C short term. For long term storage, store at -20°C, avoiding freeze/thaw cycles.

NOTE

For Research Use Only. Not for diagnostic, therapeutics, prophylactic or in vivo use.