

DATASHEET

RABIN3 Rabbit Polyclonal Antibody

CAT. NO. APA13659

KEY FEATURES

Target	RABIN3	Source / Host	Rabbit
Reactivity	Human, Mouse, Rat	Clonality	Polyclonal
Applications	WB	Conjugation	Unconjugated
Form / Buffer	Liquid in 0.42% Potassium phosphate, 0.87% Sodium chloride, pH 7.3, 30% glycerol, and 0.01% sodium azide.		Storage at -20°C

BACKGROUND

Guanine nucleotide exchange factor (GEF) which may activate RAB8A and RAB8B which may activate RAB8A and RAB8B . Promotes the exchange of GDP to GTP, converting inactive GDP-bound Rab proteins into their active GTP-bound form . Mediates the release of GDP from RAB8A and RAB8B but not from RAB3A or RAB5 . Modulates actin organization and promotes polarized transport of RAB8A-specific vesicles to the cell surface . Together with RAB11A, RAB8A, the exocyst complex, PARD3, PRKCI, ANXA2, CDC42 and DNMBP promotes transcytosis of PODXL to the apical membrane initiation sites (AMIS), apical surface formation and lumenogenesis .

APPLICATION

To ensure optimal assay performance, AREX recommends conducting reagent titration tailored to each testing system for optimal detection results.

WB	1:500 - 1:1000
----	----------------

*Results are sample-specific. Please refer to your local assay conditions and test parameters for reference.

PRODUCT OVERVIEW

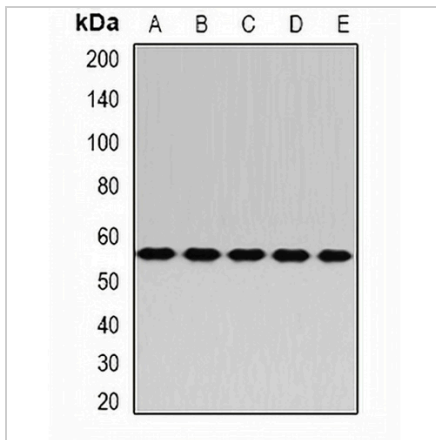
Description	Rabbit polyclonal antibody to RABIN3
Specificity	Recognizes endogenous levels of RABIN3 protein.
Antibody Type	Primary antibody
Immunogen	Recombinant fusion protein of human RABIN3
Purification	The antibody was purified by immunogen affinity chromatography.
Molecular Weight	Predicted: 28; Observed: 53 kD
Form/Buffer	Liquid in 0.42% Potassium phosphate, 0.87% Sodium chloride, pH 7.3, 30% glycerol, and 0.01% sodium azide.
Alternative Names	RABIN8; Rab-3A-interacting protein; Rab3A-interacting protein; Rabin-3; SSX2-interacting protein
Gene Symbol	RAB3IP
Entrez Gene	117177(Human); 216363(Mouse)
SwissProt	Q96QF0(Human); Q68EF0(Mouse); Q62739(Rat)

*AREX continuously optimizes our products. Webpage content may not reflect the latest updates. For inquiries, please contact info@arexbio.com or your local distributor.

*Clone Number, Reactivity, Source/Host and Clonality can be found in the product name and Key Features section above.

DATASHEET**RABIN3 Rabbit Polyclonal Antibody**

CAT. NO. APA13659

DATA

Western blot analysis of RABIN3 expression in Hela (A), A549 (B), mouse kidney (C), mouse liver (D), rat brain (E) whole cell lysates. (Predicted band size: 28; 33-53 kD; Observed band size: 53 kD)

STORAGE

Store at 4°C short term. For long term storage, store at -20°C, avoiding freeze/thaw cycles.

NOTE

For Research Use Only. Not for diagnostic, therapeutics, prophylactic or in vivo use.