

**DATASHEET**

**RAB5A Rabbit Polyclonal Antibody**

CAT. NO. APA13660

**KEY FEATURES**

Target	RAB5A	Source / Host	Rabbit
Reactivity	Human, Mouse, Rat	Clonality	Polyclonal
Applications	WB, IF/ICC	Conjugation	Unconjugated
Form / Buffer	Liquid in 0.42% Potassium phosphate, 0.87% Sodium chloride, pH 7.3, 30% glycerol, and 0.01% sodium azide.		Storage at -20°C

**BACKGROUND**

The small GTPases Rab are key regulators of intracellular membrane trafficking, from the formation of transport vesicles to their fusion with membranes. Rabs cycle between an inactive GDP-bound form and an active GTP-bound form that is able to recruit to membranes different sets of downstream effectors directly responsible for vesicle formation, movement, tethering and fusion. RAB5A is required for the fusion of plasma membranes and early endosomes and involved in early endocytic trafficking . Required for EEA1 recruitment to early endosomes . Recruits FERRY complex to early endosomes, where FERRY links early endosomes with a subgroup of mRNAs to enable mRNA intracellular distribution . Recruits RABEP1/Rabaptin-5 effector to early endosomes, thereby promoting endocytic membrane fusion .

**APPLICATION**

To ensure optimal assay performance, AREX recommends conducting reagent titration tailored to each testing system for optimal detection results.

WB	1:500 - 1:2000
IF/ICC	1:50 - 1:200

\*Results are sample-specific. Please refer to your local assay conditions and test parameters for reference.

**PRODUCT OVERVIEW**

Description	Rabbit polyclonal antibody to RAB5A
Specificity	Recognizes endogenous levels of RAB5A protein.
Antibody Type	Primary antibody
Immunogen	Recombinant fusion protein of human RAB5A
Purification	The antibody was purified by immunogen affinity chromatography.
Molecular Weight	Predicted: 22; Observed: 23 kD
Form/Buffer	Liquid in 0.42% Potassium phosphate, 0.87% Sodium chloride, pH 7.3, 30% glycerol, and 0.01% sodium azide.
Alternative Names	RAB5; Ras-related protein Rab-5A
Gene Symbol	RAB5A
Entrez Gene	5868(Human); 271457(Mouse)
SwissProt	P20339(Human); Q9CQD1(Mouse)

\*AREX continuously optimizes our products. Webpage content may not reflect the latest updates. For inquiries, please contact [info@arexbio.com](mailto:info@arexbio.com) or your local distributor.

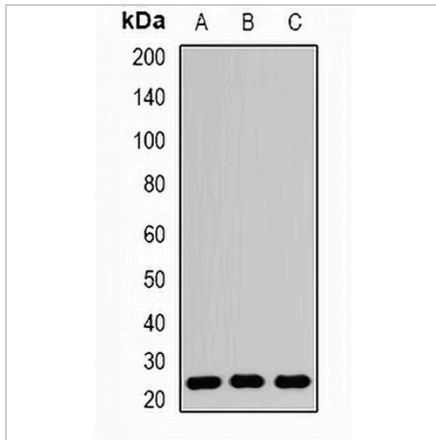
\*Clone Number, Reactivity, Source/Host and Clonality can be found in the product name and Key Features section above.

**DATASHEET**

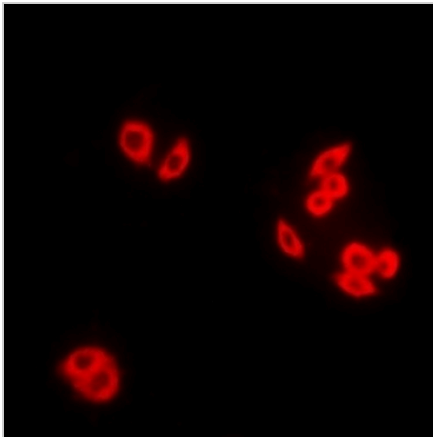
**RAB5A Rabbit Polyclonal Antibody**

CAT. NO. APA13660

**DATA**



Western blot analysis of RAB5A expression in HeLa (A), PC12 (B), mouse brain (C) whole cell lysates. (Predicted band size: 22; 23 kD; Observed band size: 23 kD)



Immunofluorescent analysis of RAB5A staining in HeLa cells. Formalin-fixed cells were permeabilized with 0.1% Triton X-100 in TBS for 5-10 minutes and blocked with 3% BSA-PBS for 30 minutes at room temperature. Cells were probed with the primary antibody in 3% BSA-PBS and incubated overnight at 4 °C in a humidified chamber. Cells were washed with PBST and incubated with a DyLight 594-conjugated secondary antibody (red) in PBS at room temperature in the dark.

**STORAGE**

Store at 4°C short term. For long term storage, store at -20°C, avoiding freeze/thaw cycles.

**NOTE**

For Research Use Only. Not for diagnostic, therapeutics, prophylactic or in vivo use.