

DATASHEET

RALBP1 Rabbit Polyclonal Antibody

CAT. NO. APA13661

KEY FEATURES

Target	RALBP1	Source / Host	Rabbit
Reactivity	Human, Mouse, Rat	Clonality	Polyclonal
Applications	WB	Conjugation	Unconjugated
Form / Buffer	Liquid in 0.42% Potassium phosphate, 0.87% Sodium chloride, pH 7.3, 30% glycerol, and 0.01% sodium azide.		Storage at -20°C

BACKGROUND

Multifunctional protein that functions as a downstream effector of RALA and RALB . As a GTPase-activating protein/GAP can inactivate CDC42 and RAC1 by stimulating their GTPase activity . As part of the Ral signaling pathway, may also regulate ligand-dependent EGF and insulin receptors-mediated endocytosis . During mitosis, may act as a scaffold protein in the phosphorylation of EPSIN/EPN1 by the mitotic kinase cyclin B-CDK1, preventing endocytosis during that phase of the cell cycle . During mitosis, also controls mitochondrial fission as an effector of RALA . Recruited to mitochondrion by RALA, acts as a scaffold to foster the mitotic kinase cyclin B-CDK1-mediated phosphorylation and activation of DNM1L .

APPLICATION

To ensure optimal assay performance, AREX recommends conducting reagent titration tailored to each testing system for optimal detection results.

WB	1:500 - 1:1000
----	----------------

*Results are sample-specific. Please refer to your local assay conditions and test parameters for reference.

PRODUCT OVERVIEW

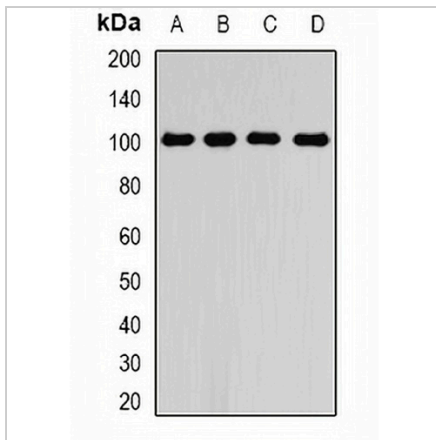
Description	Rabbit polyclonal antibody to RALBP1
Specificity	Recognizes endogenous levels of RALBP1 protein.
Antibody Type	Primary antibody
Immunogen	Recombinant fusion protein of human RALBP1
Purification	The antibody was purified by immunogen affinity chromatography.
Molecular Weight	Predicted: 76 kD; Observed: 100 kD
Form/Buffer	Liquid in 0.42% Potassium phosphate, 0.87% Sodium chloride, pH 7.3, 30% glycerol, and 0.01% sodium azide.
Alternative Names	RLIP1; RLIP76; RalA-binding protein 1; RalBP1; 76 kDa Ral-interacting protein; Dinitrophenyl S-glutathione ATPase; DNP-SG ATPase; Ral-interacting protein 1
Gene Symbol	RALBP1
Entrez Gene	10928(Human); 19765(Mouse); 84014(Rat)
SwissProt	Q15311(Human); Q62172(Mouse); Q62796(Rat)

*AREX continuously optimizes our products. Webpage content may not reflect the latest updates. For inquiries, please contact info@arexbio.com or your local distributor.

*Clone Number, Reactivity, Source/Host and Clonality can be found in the product name and Key Features section above.

DATASHEET**RALBP1 Rabbit Polyclonal Antibody**

CAT. NO. APA13661

DATA

Western blot analysis of RALBP1 expression in A673 (A), SW480 (B), mouse spleen (C), mouse lung (D) whole cell lysates. (Predicted band size: 76 kD; Observed band size: 100 kD)

STORAGE

Store at 4°C short term. For long term storage, store at -20°C, avoiding freeze/thaw cycles.

NOTE

For Research Use Only. Not for diagnostic, therapeutics, prophylactic or in vivo use.