

DATASHEET

RBP4 Rabbit Polyclonal Antibody

CAT. NO. APA13666

KEY FEATURES

Target	RBP4	Source / Host	Rabbit
Reactivity	Human, Mouse, Rat	Clonality	Polyclonal
Applications	WB	Conjugation	Unconjugated
Form / Buffer	Liquid in 0.42% Potassium phosphate, 0.87% Sodium chloride, pH 7.3, 30% glycerol, and 0.01% sodium azide.		Storage at -20°C

BACKGROUND

Retinol-binding protein that mediates retinol transport in blood plasma . Delivers retinol from the liver stores to the peripheral tissues (Probable). Transfers the bound all-trans retinol to STRA6, that then facilitates retinol transport across the cell membrane .

APPLICATION

To ensure optimal assay performance, AREX recommends conducting reagent titration tailored to each testing system for optimal detection results.

WB	1:500 - 1:2000
----	----------------

*Results are sample-specific. Please refer to your local assay conditions and test parameters for reference.

PRODUCT OVERVIEW

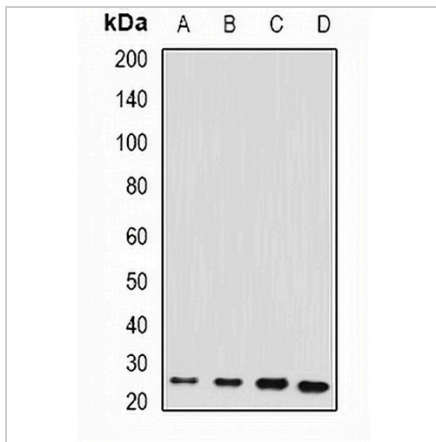
Description	Rabbit polyclonal antibody to RBP4
Specificity	Recognizes endogenous levels of RBP4 protein.
Antibody Type	Primary antibody
Immunogen	Recombinant fusion protein of human RBP4
Purification	The antibody was purified by immunogen affinity chromatography.
Molecular Weight	Predicted: 23 kD; Observed: 23 kD
Form/Buffer	Liquid in 0.42% Potassium phosphate, 0.87% Sodium chloride, pH 7.3, 30% glycerol, and 0.01% sodium azide.
Alternative Names	Retinol-binding protein 4; Plasma retinol-binding protein; PRBP; RBP
Gene Symbol	RBP4
Entrez Gene	5950(Human); 19662(Mouse); 25703(Rat)
SwissProt	P02753(Human); Q00724(Mouse); P04916(Rat)

*AREX continuously optimizes our products. Webpage content may not reflect the latest updates. For inquiries, please contact info@arexbio.com or your local distributor.

*Clone Number, Reactivity, Source/Host and Clonality can be found in the product name and Key Features section above.

DATASHEET**RBP4 Rabbit Polyclonal Antibody**

CAT. NO. APA13666

DATA

Western blot analysis of RBP4 expression in SW620 (A), HeLa (B), mouse liver (C), mouse spleen (D) whole cell lysates. (Predicted band size: 23 kD; Observed band size: 23 kD)

STORAGE

Store at 4°C short term. For long term storage, store at -20°C, avoiding freeze/thaw cycles.

NOTE

For Research Use Only. Not for diagnostic, therapeutics, prophylactic or in vivo use.