

DATASHEET

RFC5 Rabbit Polyclonal Antibody

CAT. NO. APA13669

KEY FEATURES

Target	RFC5	Source / Host	Rabbit
Reactivity	Human, Mouse	Clonality	Polyclonal
Applications	WB	Conjugation	Unconjugated
Form / Buffer	Liquid in 0.42% Potassium phosphate, 0.87% Sodium chloride, pH 7.3, 30% glycerol, and 0.01% sodium azide.		Storage at-20°C

BACKGROUND

Subunit of the replication factor C (RFC) complex which acts during elongation of primed DNA templates by DNA polymerases delta and epsilon, and is necessary for ATP-dependent loading of proliferating cell nuclear antigen (PCNA) onto primed DNA.

APPLICATION

To ensure optimal assay performance, AREX recommends conducting reagent titration tailored to each testing system for optimal detection results.

WB	1:500 - 1:1000
----	----------------

*Results are sample-specific. Please refer to your local assay conditions and test parameters for reference.

PRODUCT OVERVIEW

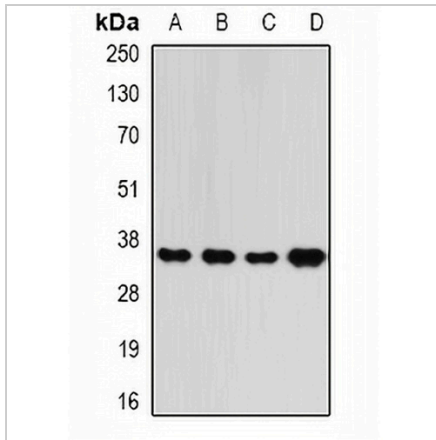
Description	Rabbit polyclonal antibody to RFC5
Specificity	Recognizes endogenous levels of RFC5 protein.
Antibody Type	Primary antibody
Immunogen	Recombinant fusion protein of human RFC5
Purification	The antibody was purified by immunogen affinity chromatography.
Molecular Weight	Predicted: 36; Observed: 36 kD
Form/Buffer	Liquid in 0.42% Potassium phosphate, 0.87% Sodium chloride, pH 7.3, 30% glycerol, and 0.01% sodium azide.
Alternative Names	Replication factor C subunit 5; Activator 1 36 kDa subunit; A1 36 kDa subunit; Activator 1 subunit 5; Replication factor C 36 kDa subunit; RF-C 36 kDa subunit; RFC36
Gene Symbol	RFC5
Entrez Gene	5985(Human)
SwissProt	P40937(Human)

*AREX continuously optimizes our products. Webpage content may not reflect the latest updates. For inquiries, please contact info@arexbio.com or your local distributor.

*Clone Number, Reactivity, Source/Host and Clonality can be found in the product name and Key Features section above.

DATASHEET**RFC5 Rabbit Polyclonal Antibody**

CAT. NO. APA13669

DATA

Western blot analysis of RFC5 expression in SKOV3 (A), MCF7 (B), mouse liver (C), mouse spleen (D) whole cell lysates. (Predicted band size: 36; 38 kD; Observed band size: 36 kD)

STORAGE

Store at 4°C short term. For long term storage, store at -20°C, avoiding freeze/thaw cycles.

NOTE

For Research Use Only. Not for diagnostic, therapeutics, prophylactic or in vivo use.