

DATASHEET

RIPK2 Rabbit Polyclonal Antibody

CAT. NO. APA13672

KEY FEATURES

Target	RIPK2	Source / Host	Rabbit
Reactivity	Human, Mouse, Rat	Clonality	Polyclonal
Applications	WB	Conjugation	Unconjugated
Form / Buffer	Liquid in 0.42% Potassium phosphate, 0.87% Sodium chloride, pH 7.3, 30% glycerol, and 0.01% sodium azide.		Storage at -20°C

BACKGROUND

Serine/threonine/tyrosine-protein kinase that plays an essential role in modulation of innate and adaptive immune responses . Acts as a key effector of NOD1 and NOD2 signaling pathways: upon activation by bacterial peptidoglycans, NOD1 and NOD2 oligomerize and recruit RIPK2 via CARD-CARD domains, leading to the formation of RIPK2 filaments . Once recruited, RIPK2 autophosphorylates and undergoes 'Lys-63'-linked polyubiquitination by E3 ubiquitin ligases XIAP, BIRC2 and BIRC3, as well as 'Met-1'-linked (linear) polyubiquitination by the LUBAC complex, becoming a scaffolding protein for downstream effectors . 'Met-1'-linked polyubiquitin chains attached to RIPK2 recruit IKK β /NEMO, which undergoes 'Lys-63'-linked polyubiquitination in a RIPK2-dependent process .

APPLICATION

To ensure optimal assay performance, AREX recommends conducting reagent titration tailored to each testing system for optimal detection results.

WB	1:500 - 1:1000
----	----------------

*Results are sample-specific. Please refer to your local assay conditions and test parameters for reference.

PRODUCT OVERVIEW

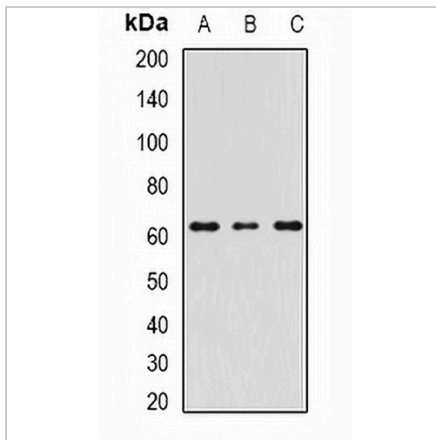
Description	Rabbit polyclonal antibody to RIPK2
Specificity	Recognizes endogenous levels of RIPK2 protein.
Antibody Type	Primary antibody
Immunogen	Recombinant fusion protein of human RIPK2
Purification	The antibody was purified by immunogen affinity chromatography.
Molecular Weight	Predicted: 45; Observed: 61 kD
Form/Buffer	Liquid in 0.42% Potassium phosphate, 0.87% Sodium chloride, pH 7.3, 30% glycerol, and 0.01% sodium azide.
Alternative Names	CARDIAK; RICK; RIP2; Receptor-interacting serine/threonine-protein kinase 2; CARD-containing interleukin-1 beta-converting enzyme-associated kinase; CARD-containing IL-1 beta ICE-kinase; RIP-like-interacting CLARP kinase; Receptor-interacting protein 2; RIP-2; Tyrosine-protein kinase RIPK2
Gene Symbol	RIPK2
Entrez Gene	8767(Human); 192656(Mouse)
SwissProt	O43353(Human); P58801(Mouse)

*AREX continuously optimizes our products. Webpage content may not reflect the latest updates. For inquiries, please contact info@arexbio.com or your local distributor.

*Clone Number, Reactivity, Source/Host and Clonality can be found in the product name and Key Features section above.

DATASHEET**RIPK2 Rabbit Polyclonal Antibody**

CAT. NO. APA13672

DATA

Western blot analysis of RIPK2 expression in MCF7 (A), mouse spleen (B), mouse testis (C) whole cell lysates. (Predicted band size: 45; 61 kD; Observed band size: 61 kD)

STORAGE

Store at 4°C short term. For long term storage, store at -20°C, avoiding freeze/thaw cycles.

NOTE

For Research Use Only. Not for diagnostic, therapeutics, prophylactic or in vivo use.