

**DATASHEET**

**RUFY1 Rabbit Polyclonal Antibody**

CAT. NO. APA13681

**KEY FEATURES**

Target	RUFY1	Source / Host	Rabbit
Reactivity	Human, Mouse, Rat	Clonality	Polyclonal
Applications	WB, IHC	Conjugation	Unconjugated
Form / Buffer	Liquid in 0.42% Potassium phosphate, 0.87% Sodium chloride, pH 7.3, 30% glycerol, and 0.01% sodium azide.		Storage at -20°C

**BACKGROUND**

Activating adapter involved in cargo sorting from early/recycling endosomes. Regulates retrieval of proteins from endosomes to the trans-Golgi network through interaction with the dynein-dynactin complex. Dual effector of RAB4B and RAB14, mediates a cooperative interaction allowing endosomal tethering and fusion. Binds phospholipid vesicles containing phosphatidylinositol 3-phosphate and participates in early endosomal trafficking. In oocytes, self-assembles to form a protein matrix which hold together endolysosomes, autophagosomes and proteasomes and generate non-membrane-bound compartments called endolysosomal vesicular assemblies (ELVAs). In immature oocytes, ELVAs sequester ubiquitinated protein aggregates and degrade them upon oocyte maturation.

**APPLICATION**

To ensure optimal assay performance, AREX recommends conducting reagent titration tailored to each testing system for optimal detection results.

WB	1:500 - 1:2000
IHC	1:50 - 1:100

\*Results are sample-specific. Please refer to your local assay conditions and test parameters for reference.

**PRODUCT OVERVIEW**

Description	Rabbit polyclonal antibody to RUFY1
Specificity	Recognizes endogenous levels of RUFY1 protein.
Antibody Type	Primary antibody
Immunogen	Recombinant fusion protein of human RUFY1
Purification	The antibody was purified by immunogen affinity chromatography.
Molecular Weight	Predicted: 44; Observed: 80 kD
Form/Buffer	Liquid in 0.42% Potassium phosphate, 0.87% Sodium chloride, pH 7.3, 30% glycerol, and 0.01% sodium azide.
Alternative Names	RABIP4; ZFYVE12; RUN and FYVE domain-containing protein 1; FYVE-finger protein EIP1; La-binding protein 1; Rab4-interacting protein; Zinc finger FYVE domain-containing protein 12
Gene Symbol	RUFY1
Entrez Gene	80230(Human); 216724(Mouse)
SwissProt	Q96T51(Human); Q8BIJ7(Mouse)

\*AREX continuously optimizes our products. Webpage content may not reflect the latest updates. For inquiries, please contact [info@arexbio.com](mailto:info@arexbio.com) or your local distributor.

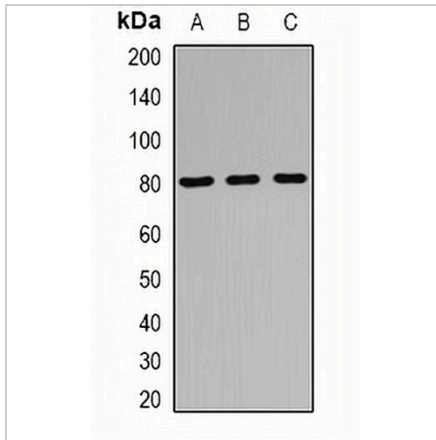
\*Clone Number, Reactivity, Source/Host and Clonality can be found in the product name and Key Features section above.

**DATASHEET**

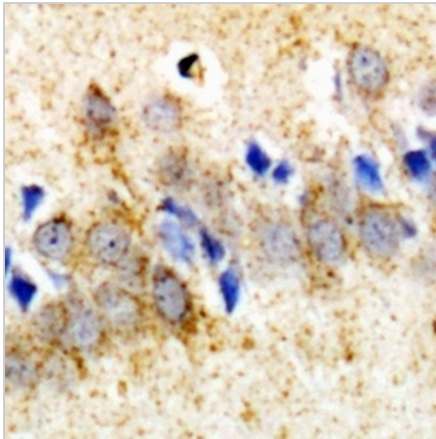
**RUFY1 Rabbit Polyclonal Antibody**

CAT. NO. APA13681

**DATA**



Western blot analysis of RUFY1 expression in mouse kidney (A), mouse heart (B), rat lung (C) whole cell lysates. (Predicted band size: 44; 69; 79 kD; Observed band size: 80 kD)



Immunohistochemical analysis of RUFY1 staining in rat brain formalin fixed paraffin embedded tissue section. The section was pre-treated using heat mediated antigen retrieval with sodium citrate buffer (pH 6.0). The section was then incubated with the antibody at room temperature and detected using an HRP conjugated compact polymer system. DAB was used as the chromogen. The section was then counterstained with haematoxylin and mounted with DPX.

**STORAGE**

Store at 4°C short term. For long term storage, store at -20°C, avoiding freeze/thaw cycles.

**NOTE**

For Research Use Only. Not for diagnostic, therapeutics, prophylactic or in vivo use.