

DATASHEET

SCO2 Rabbit Polyclonal Antibody

CAT. NO. APA13687

KEY FEATURES

Target	SCO2	Source / Host	Rabbit
Reactivity	Human, Mouse, Rat	Clonality	Polyclonal
Applications	WB, IHC	Conjugation	Unconjugated
Form / Buffer	Liquid in 0.42% Potassium phosphate, 0.87% Sodium chloride, pH 7.3, 30% glycerol, and 0.01% sodium azide.	Storage	at-20°C

BACKGROUND

Copper metallochaperone essential for the synthesis and maturation of cytochrome c oxidase subunit II (MT-CO2/COX2); together with SCO1, facilitates the incorporation of copper into the Cu(A) site of MT-CO2/COX2 ; together with SCO1, facilitates the incorporation of copper into the Cu(A) site of MT-CO2/COX2 . Could also act as a thiol-disulfide oxidoreductase to regulate the redox state of the cysteines in SCO1 during maturation of MT-CO2/COX2 .

APPLICATION

To ensure optimal assay performance, AREX recommends conducting reagent titration tailored to each testing system for optimal detection results.

WB	1:500 - 1:2000
IHC	1:50 - 1:200

*Results are sample-specific. Please refer to your local assay conditions and test parameters for reference.

PRODUCT OVERVIEW

Description	Rabbit polyclonal antibody to SCO2
Specificity	Recognizes endogenous levels of SCO2 protein.
Antibody Type	Primary antibody
Immunogen	Recombinant fusion protein of human SCO2
Purification	The antibody was purified by immunogen affinity chromatography.
Molecular Weight	Predicted: 29 kD; Observed: 30 kD
Form/Buffer	Liquid in 0.42% Potassium phosphate, 0.87% Sodium chloride, pH 7.3, 30% glycerol, and 0.01% sodium azide.
Alternative Names	Protein SCO2 homolog mitochondrial
Gene Symbol	SCO2
Entrez Gene	9997(Human); 100126824(Mouse)
SwissProt	O43819(Human); Q8VCL2(Mouse)

*AREX continuously optimizes our products. Webpage content may not reflect the latest updates. For inquiries, please contact info@arexbio.com or your local distributor.

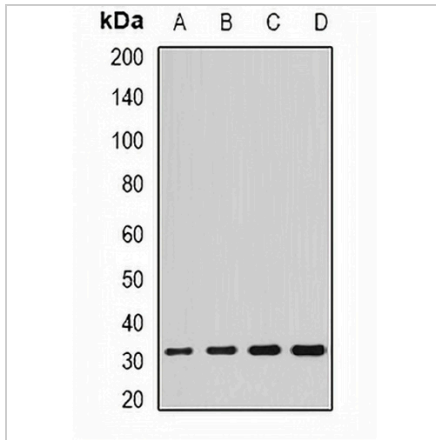
*Clone Number, Reactivity, Source/Host and Clonality can be found in the product name and Key Features section above.

DATASHEET

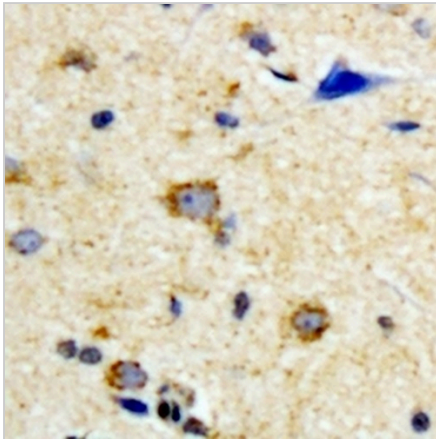
SCO2 Rabbit Polyclonal Antibody

CAT. NO. APA13687

DATA



Western blot analysis of SCO2 expression in HL60 (A), SKOV3 (B), mouse brain (C), rat liver (D) whole cell lysates. (Predicted band size: 29 kD; Observed band size: 30 kD)



Immunohistochemical analysis of SCO2 staining in human brain formalin fixed paraffin embedded tissue section. The section was pre-treated using heat mediated antigen retrieval with sodium citrate buffer (pH 6.0). The section was then incubated with the antibody at room temperature and detected using an HRP conjugated compact polymer system. DAB was used as the chromogen. The section was then counterstained with haematoxylin and mounted with DPX.

STORAGE

Store at 4°C short term. For long term storage, store at -20°C, avoiding freeze/thaw cycles.

NOTE

For Research Use Only. Not for diagnostic, therapeutics, prophylactic or in vivo use.