

**DATASHEET**

**Syntenin Rabbit Polyclonal Antibody**

CAT. NO. APA13688

**KEY FEATURES**

Target	Syntenin	Source / Host	Rabbit
Reactivity	Human	Clonality	Polyclonal
Applications	WB, IF/ICC	Conjugation	Unconjugated
Form / Buffer	Liquid in 0.42% Potassium phosphate, 0.87% Sodium chloride, pH 7.3, 30% glycerol, and 0.01% sodium azide.		Storage at -20°C

**BACKGROUND**

Multifunctional adapter protein involved in diverse array of functions including trafficking of transmembrane proteins, neuro and immunomodulation, exosome biogenesis, and tumorigenesis . Positively regulates TGFB1-mediated SMAD2/3 activation and TGFB1-induced epithelial-to-mesenchymal transition (EMT) and cell migration in various cell types. May increase TGFB1 signaling by enhancing cell-surface expression of TGFR1 by preventing the interaction between TGFR1 and CAV1 and subsequent CAV1-dependent internalization and degradation of TGFR1 . In concert with SDC1/4 and PDCD6IP, regulates exosome biogenesis . Regulates migration, growth, proliferation, and cell cycle progression in a variety of cancer types .

**APPLICATION**

To ensure optimal assay performance, AREX recommends conducting reagent titration tailored to each testing system for optimal detection results.

WB	1:500 - 1:2000
IF/ICC	1:50 - 1:200

\*Results are sample-specific. Please refer to your local assay conditions and test parameters for reference.

**PRODUCT OVERVIEW**

Description	Rabbit polyclonal antibody to Syntenin
Specificity	Recognizes endogenous levels of Syntenin protein.
Antibody Type	Primary antibody
Immunogen	Recombinant fusion protein of human Syntenin
Purification	The antibody was purified by immunogen affinity chromatography.
Molecular Weight	Predicted: 31; Observed: 32 kD
Form/Buffer	Liquid in 0.42% Potassium phosphate, 0.87% Sodium chloride, pH 7.3, 30% glycerol, and 0.01% sodium azide.
Alternative Names	MDA9; SYCL; Syntenin-1; Melanoma differentiation-associated protein 9; MDA-9; Pro-TGF-alpha cytoplasmic domain-interacting protein 18; TACIP18; Scaffold protein Pbp1; Syndecan-binding protein 1
Gene Symbol	SDCBP
Entrez Gene	6386(Human)
SwissProt	O00560(Human)

\*AREX continuously optimizes our products. Webpage content may not reflect the latest updates. For inquiries, please contact [info@arexbio.com](mailto:info@arexbio.com) or your local distributor.

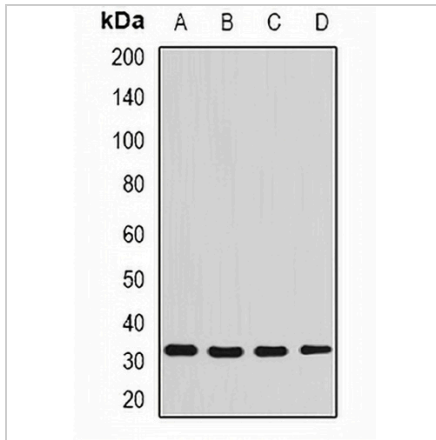
\*Clone Number, Reactivity, Source/Host and Clonality can be found in the product name and Key Features section above.

**DATASHEET**

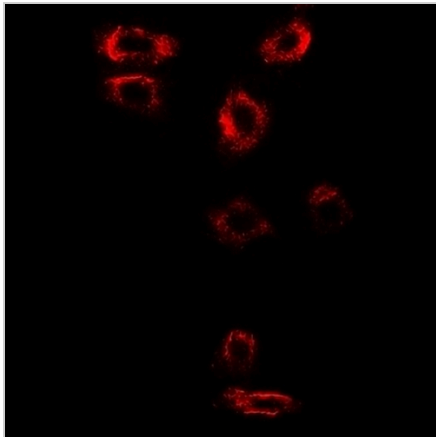
**Syntenin Rabbit Polyclonal Antibody**

CAT. NO. APA13688

**DATA**



Western blot analysis of Syntenin expression in SW480 (A), THP1 (B), Raji (C), mouse liver (D) whole cell lysates. (Predicted band size: 31; 32 kD; Observed band size: 32 kD)



Immunofluorescent analysis of Syntenin staining in SW480 cells. Formalin-fixed cells were permeabilized with 0.1% Triton X-100 in TBS for 5-10 minutes and blocked with 3% BSA-PBS for 30 minutes at room temperature. Cells were probed with the primary antibody in 3% BSA-PBS and incubated overnight at 4 °C in a humidified chamber. Cells were washed with PBST and incubated with a DyLight 594-conjugated secondary antibody (red) in PBS at room temperature in the dark.

**STORAGE**

Store at 4°C short term. For long term storage, store at -20°C, avoiding freeze/thaw cycles.

**NOTE**

For Research Use Only. Not for diagnostic, therapeutics, prophylactic or in vivo use.