

DATASHEET

Serpin A4 Rabbit Polyclonal Antibody

CAT. NO. APA13690

KEY FEATURES

Target	Serpin A4	Source / Host	Rabbit
Reactivity	Human	Clonality	Polyclonal
Applications	WB	Conjugation	Unconjugated
Form / Buffer	Liquid in 0.42% Potassium phosphate, 0.87% Sodium chloride, pH 7.3, 30% glycerol, and 0.01% sodium azide.		Storage at-20°C

BACKGROUND

Inhibits human amidolytic and kininogenase activities of tissue kallikrein. Inhibition is achieved by formation of an equimolar, heat- and SDS-stable complex between the inhibitor and the enzyme, and generation of a small C-terminal fragment of the inhibitor due to cleavage at the reactive site by tissue kallikrein.

APPLICATION

To ensure optimal assay performance, AREX recommends conducting reagent titration tailored to each testing system for optimal detection results.

WB	1:500 - 1:2000
----	----------------

*Results are sample-specific. Please refer to your local assay conditions and test parameters for reference.

PRODUCT OVERVIEW

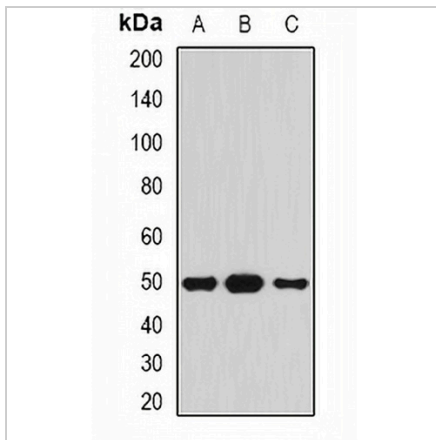
Description	Rabbit polyclonal antibody to Serpin A4
Specificity	Recognizes endogenous levels of Serpin A4 protein.
Antibody Type	Primary antibody
Immunogen	Recombinant fusion protein of human Serpin A4
Purification	The antibody was purified by immunogen affinity chromatography.
Molecular Weight	Predicted: 48 kD; Observed: 50 kD
Form/Buffer	Liquid in 0.42% Potassium phosphate, 0.87% Sodium chloride, pH 7.3, 30% glycerol, and 0.01% sodium azide.
Alternative Names	KST; PI4; Kallistatin; Kallikrein inhibitor; Peptidase inhibitor 4; PI-4; Serpin A4
Gene Symbol	SERPINA4
Entrez Gene	5267(Human)
SwissProt	P29622(Human)

*AREX continuously optimizes our products. Webpage content may not reflect the latest updates. For inquiries, please contact info@arexbio.com or your local distributor.

*Clone Number, Reactivity, Source/Host and Clonality can be found in the product name and Key Features section above.

DATASHEET**Serpin A4 Rabbit Polyclonal Antibody**

CAT. NO. APA13690

DATA

Western blot analysis of Serpin A4 expression in HepG2 (A), mouse pancreas (B), rat pancreas (C) whole cell lysates. (Predicted band size: 48 kD; Observed band size: 50 kD)

STORAGE

Store at 4°C short term. For long term storage, store at -20°C, avoiding freeze/thaw cycles.

NOTE

For Research Use Only. Not for diagnostic, therapeutics, prophylactic or in vivo use.