

**DATASHEET**

**Serpin G1 Rabbit Polyclonal Antibody**

CAT. NO. APA13691

**KEY FEATURES**

Target	Serpin G1	Source / Host	Rabbit
Reactivity	Human, Mouse, Rat	Clonality	Polyclonal
Applications	WB, IF/ICC	Conjugation	Unconjugated
Form / Buffer	Liquid in 0.42% Potassium phosphate, 0.87% Sodium chloride, pH 7.3, 30% glycerol, and 0.01% sodium azide.		Storage at -20°C

**BACKGROUND**

Serine protease inhibitor, which acts as a regulator of the classical complement pathway. Forms a proteolytically inactive stoichiometric complex with the C1r or C1s proteases. May also regulate blood coagulation, fibrinolysis and the generation of kinins. Very efficient inhibitor of FXIIa. Inhibits chymotrypsin and kallikrein.

**APPLICATION**

To ensure optimal assay performance, AREX recommends conducting reagent titration tailored to each testing system for optimal detection results.

WB	1:500 - 1:2000
IF/ICC	1:50 - 1:200

\*Results are sample-specific. Please refer to your local assay conditions and test parameters for reference.

**PRODUCT OVERVIEW**

Description	Rabbit polyclonal antibody to Serpin G1
Specificity	Recognizes endogenous levels of Serpin G1 protein.
Antibody Type	Primary antibody
Immunogen	Recombinant fusion protein of human Serpin G1
Purification	The antibody was purified by immunogen affinity chromatography.
Molecular Weight	Predicted: 49; Observed: 95 kD
Form/Buffer	Liquid in 0.42% Potassium phosphate, 0.87% Sodium chloride, pH 7.3, 30% glycerol, and 0.01% sodium azide.
Alternative Names	C1IN; C1NH; Plasma protease C1 inhibitor; C1 Inh; C1Inh; C1 esterase inhibitor; C1-inhibiting factor; Serpin G1
Gene Symbol	SERPING1
Entrez Gene	710(Human); 12258(Mouse); 295703(Rat)
SwissProt	P05155(Human); P97290(Mouse); Q6P734(Rat)

\*AREX continuously optimizes our products. Webpage content may not reflect the latest updates. For inquiries, please contact [info@arexbio.com](mailto:info@arexbio.com) or your local distributor.

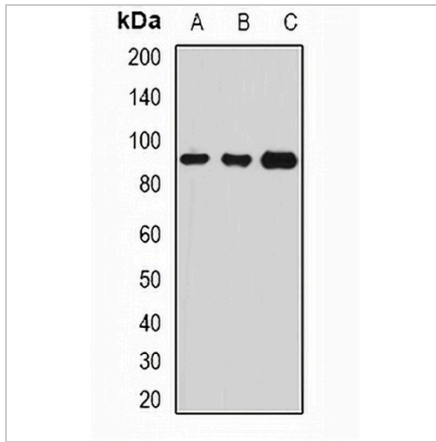
\*Clone Number, Reactivity, Source/Host and Clonality can be found in the product name and Key Features section above.

**DATASHEET**

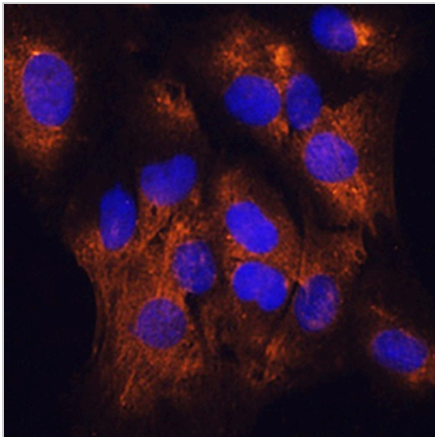
**Serpin G1 Rabbit Polyclonal Antibody**

CAT. NO. APA13691

**DATA**



Western blot analysis of Serpin G1 expression in SW480 (A), MCF7 (B), HepG2 (C) whole cell lysates. (Predicted band size: 49; 55 kD; Observed band size: 95 kD)



Immunofluorescent analysis of Serpin G1 staining in C6 cells. Formalin-fixed cells were permeabilized with 0.1% Triton X-100 in TBS for 5-10 minutes and blocked with 3% BSA-PBS for 30 minutes at room temperature. Cells were probed with the primary antibody in 3% BSA-PBS and incubated overnight at 4 °C in a humidified chamber. Cells were washed with PBST and incubated with a AREX® Fluor 594-conjugated secondary antibody (red) in PBS at room temperature in the dark. DAPI was used to stain the cell nuclei (blue).

**STORAGE**

Store at 4°C short term. For long term storage, store at -20°C, avoiding freeze/thaw cycles.

**NOTE**

For Research Use Only. Not for diagnostic, therapeutics, prophylactic or in vivo use.