

**DATASHEET**

**Sigma1 Receptor Rabbit Polyclonal Antibody**

CAT. NO. APA13696

**KEY FEATURES**

Target	Sigma1 Receptor	Source / Host	Rabbit
Reactivity	Human, Mouse, Rat	Clonality	Polyclonal
Applications	WB, IHC	Conjugation	Unconjugated
Form / Buffer	Liquid in 0.42% Potassium phosphate, 0.87% Sodium chloride, pH 7.3, 30% glycerol, and 0.01% sodium azide.		Storage at-20°C

**BACKGROUND**

Functions in lipid transport from the endoplasmic reticulum and is involved in a wide array of cellular functions probably through regulation of the biogenesis of lipid microdomains at the plasma membrane. Involved in the regulation of different receptors it plays a role in BDNF signaling and EGF signaling. Also regulates ion channels like the potassium channel and could modulate neurotransmitter release. Plays a role in calcium signaling through modulation together with ANK2 of the ITP3R-dependent calcium efflux at the endoplasmic reticulum. Plays a role in several other cell functions including proliferation, survival and death. Originally identified for its ability to bind various psychoactive drugs it is involved in learning processes, memory and mood alteration .

**APPLICATION**

To ensure optimal assay performance, AREX recommends conducting reagent titration tailored to each testing system for optimal detection results.

WB	1:500 - 1:2000
IHC	1:50 - 1:200

\*Results are sample-specific. Please refer to your local assay conditions and test parameters for reference.

**PRODUCT OVERVIEW**

Description	Rabbit polyclonal antibody to Sigma1 Receptor
Specificity	Recognizes endogenous levels of Sigma1 Receptor protein.
Antibody Type	Primary antibody
Immunogen	Recombinant fusion protein of human Sigma1 Receptor
Purification	The antibody was purified by immunogen affinity chromatography.
Molecular Weight	Predicted: 11; Observed: 25 kD
Form/Buffer	Liquid in 0.42% Potassium phosphate, 0.87% Sodium chloride, pH 7.3, 30% glycerol, and 0.01% sodium azide.
Alternative Names	OPRS1; SRBP; Sigma non-opioid intracellular receptor 1; Aging-associated gene 8 protein; SR31747-binding protein; SR-BP; Sigma 1-type opioid receptor; SIG-1R; Sigma1-receptor; Sigma1R; hSigmaR1
Gene Symbol	SIGMAR1
Entrez Gene	10280(Human); 18391(Mouse); 29336(Rat)
SwissProt	Q99720(Human); O55242(Mouse); Q9R0C9(Rat)

\*AREX continuously optimizes our products. Webpage content may not reflect the latest updates. For inquiries, please contact [info@arexbio.com](mailto:info@arexbio.com) or your local distributor.

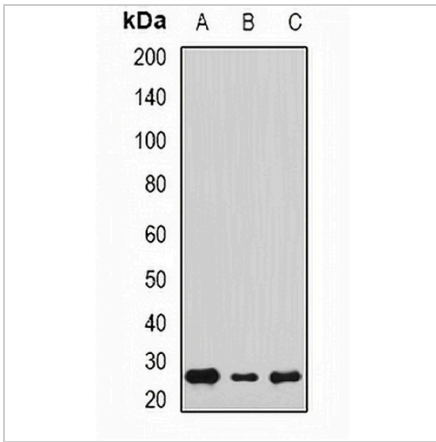
\*Clone Number, Reactivity, Source/Host and Clonality can be found in the product name and Key Features section above.

**DATASHEET**

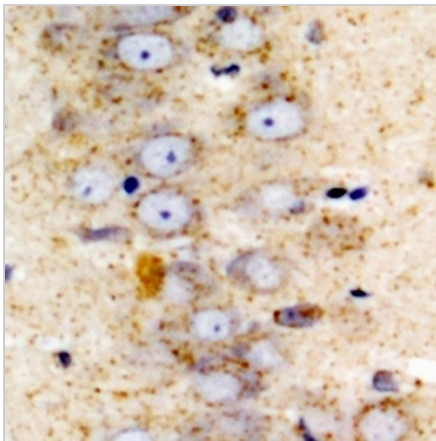
**Sigma1 Receptor Rabbit Polyclonal Antibody**

CAT. NO. APA13696

**DATA**



Western blot analysis of Sigma1 Receptor expression in Hela (A), SW620 (B), HepG2 (C) whole cell lysates. (Predicted band size: 11; 21; 22; 25 kD; Observed band size: 25 kD)



Immunohistochemical analysis of Sigma1 Receptor staining in mouse brain formalin fixed paraffin embedded tissue section. The section was pre-treated using heat mediated antigen retrieval with sodium citrate buffer (pH 6.0). The section was then incubated with the antibody at room temperature and detected using an HRP conjugated compact polymer system. DAB was used as the chromogen. The section was then counterstained with haematoxylin and mounted with DPX.

**STORAGE**

Store at 4°C short term. For long term storage, store at -20°C, avoiding freeze/thaw cycles.

**NOTE**

For Research Use Only. Not for diagnostic, therapeutics, prophylactic or in vivo use.