

DATASHEET

SNF1LK2 Rabbit Polyclonal Antibody

CAT. NO. APA13697

KEY FEATURES

Target	SNF1LK2	Source / Host	Rabbit
Reactivity	Human, Mouse, Rat	Clonality	Polyclonal
Applications	WB	Conjugation	Unconjugated
Form / Buffer	Liquid in 0.42% Potassium phosphate, 0.87% Sodium chloride, pH 7.3, 30% glycerol, and 0.01% sodium azide.		Storage at -20°C

BACKGROUND

Serine/threonine-protein kinase that plays a role in many biological processes such as fatty acid oxidation, autophagy, immune response or glucose metabolism . Phosphorylates 'Ser-794' of IRS1 in insulin-stimulated adipocytes, potentially modulating the efficiency of insulin signal transduction. Inhibits CREB activity by phosphorylating and repressing TORCs, the CREB-specific coactivators . Phosphorylates EP300 and thus inhibits its histone acetyltransferase activity . In turn, regulates the DNA-binding ability of several transcription factors such as PPARA or MLXIPL . Also plays a role in thymic T-cell development .

APPLICATION

To ensure optimal assay performance, AREX recommends conducting reagent titration tailored to each testing system for optimal detection results.

WB	1:500 - 1:2000
----	----------------

*Results are sample-specific. Please refer to your local assay conditions and test parameters for reference.

PRODUCT OVERVIEW

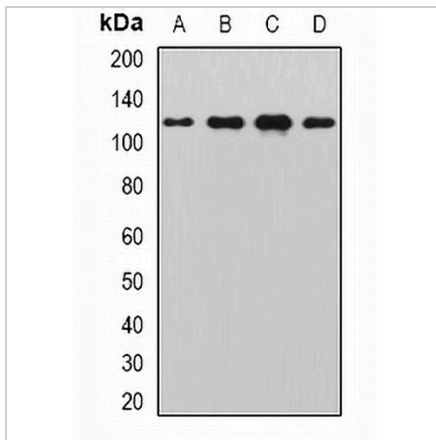
Description	Rabbit polyclonal antibody to SNF1LK2
Specificity	Recognizes endogenous levels of SNF1LK2 protein.
Antibody Type	Primary antibody
Immunogen	Recombinant fusion protein of human SNF1LK2
Purification	The antibody was purified by immunogen affinity chromatography.
Molecular Weight	Predicted: 103 kD; Observed: 129 kD
Form/Buffer	Liquid in 0.42% Potassium phosphate, 0.87% Sodium chloride, pH 7.3, 30% glycerol, and 0.01% sodium azide.
Alternative Names	KIAA0781; QIK; SNF1LK2; Serine/threonine-protein kinase SIK2; Qin-induced kinase; Salt-inducible kinase 2; SIK-2; Serine/threonine-protein kinase SNF1-like kinase 2
Gene Symbol	SIK2
Entrez Gene	23235(Human); 235344(Mouse)
SwissProt	Q9H0K1(Human); Q8CFH6(Mouse)

*AREX continuously optimizes our products. Webpage content may not reflect the latest updates. For inquiries, please contact info@arexbio.com or your local distributor.

*Clone Number, Reactivity, Source/Host and Clonality can be found in the product name and Key Features section above.

DATASHEET**SNF1LK2 Rabbit Polyclonal Antibody**

CAT. NO. APA13697

DATA

Western blot analysis of SNF1LK2 expression in HeLa (A), HepG2 (B), mouse testis (C), rat testis (D) whole cell lysates. (Predicted band size: 103 kD; Observed band size: 129 kD)

STORAGE

Store at 4°C short term. For long term storage, store at -20°C, avoiding freeze/thaw cycles.

NOTE

For Research Use Only. Not for diagnostic, therapeutics, prophylactic or in vivo use.