

DATASHEET

CD319 Rabbit Polyclonal Antibody

CAT. NO. APA13700

KEY FEATURES

Target	CD319	Source / Host	Rabbit
Reactivity	Human, Mouse	Clonality	Polyclonal
Applications	WB	Conjugation	Unconjugated
Form / Buffer	Liquid in 0.42% Potassium phosphate, 0.87% Sodium chloride, pH 7.3, 30% glycerol, and 0.01% sodium azide.		Storage at -20°C

BACKGROUND

Self-ligand receptor of the signaling lymphocytic activation molecule (SLAM) family. SLAM receptors triggered by homo- or heterotypic cell-cell interactions are modulating the activation and differentiation of a wide variety of immune cells and thus are involved in the regulation and interconnection of both innate and adaptive immune response. Activities are controlled by presence or absence of small cytoplasmic adapter proteins, SH2D1A/SAP and/or SH2D1B/EAT-2. Isoform 1 mediates NK cell activation through a SH2D1A-independent extracellular signal-regulated ERK-mediated pathway family.

APPLICATION

To ensure optimal assay performance, AREX recommends conducting reagent titration tailored to each testing system for optimal detection results.

WB	1:500 - 1:1000
----	----------------

*Results are sample-specific. Please refer to your local assay conditions and test parameters for reference.

PRODUCT OVERVIEW

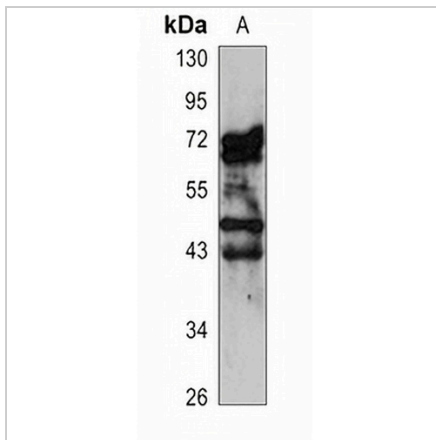
Description	Rabbit polyclonal antibody to CD319
Specificity	Recognizes endogenous levels of CD319 protein.
Antibody Type	Primary antibody
Immunogen	Recombinant fusion protein of human CD319
Purification	The antibody was purified by immunogen affinity chromatography.
Molecular Weight	Predicted: 17; Observed: 25-80 kD
Form/Buffer	Liquid in 0.42% Potassium phosphate, 0.87% Sodium chloride, pH 7.3, 30% glycerol, and 0.01% sodium azide.
Alternative Names	CS1; SLAM family member 7; CD2 subset 1; CD2-like receptor-activating cytotoxic cells; CRACC; Membrane protein FOAP-12; Novel Ly9; Protein 19A; CD319
Gene Symbol	SLAMF7
Entrez Gene	57823(Human); 75345(Mouse)
SwissProt	Q9NQ25(Human); Q8BHK6(Mouse)

*AREX continuously optimizes our products. Webpage content may not reflect the latest updates. For inquiries, please contact info@arexbio.com or your local distributor.

*Clone Number, Reactivity, Source/Host and Clonality can be found in the product name and Key Features section above.

DATASHEET**CD319 Rabbit Polyclonal Antibody**

CAT. NO. APA13700

DATA

Western blot analysis of CD319 expression in THP1 (A) whole cell lysates. (Predicted band size: 17; 21; 22; 25; 32; 37 kD; Observed band size: 25-80 kD)

STORAGE

Store at 4°C short term. For long term storage, store at -20°C, avoiding freeze/thaw cycles.

NOTE

For Research Use Only. Not for diagnostic, therapeutics, prophylactic or in vivo use.