

**DATASHEET**

**MCT4 Rabbit Polyclonal Antibody**

CAT. NO. APA13701

**KEY FEATURES**

Target	MCT4	Source / Host	Rabbit
Reactivity	Human, Mouse	Clonality	Polyclonal
Applications	WB	Conjugation	Unconjugated
Form / Buffer	Liquid in 0.42% Potassium phosphate, 0.87% Sodium chloride, pH 7.3, 30% glycerol, and 0.01% sodium azide.	Storage	at-20°C

**BACKGROUND**

Probable monocarboxylate transporter.

**APPLICATION**

To ensure optimal assay performance, AREX recommends conducting reagent titration tailored to each testing system for optimal detection results.

WB	1:500 - 1:1000
----	----------------

\*Results are sample-specific. Please refer to your local assay conditions and test parameters for reference.

**PRODUCT OVERVIEW**

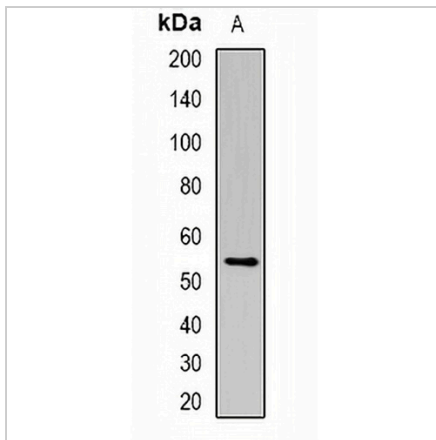
Description	Rabbit polyclonal antibody to MCT4
Specificity	Recognizes endogenous levels of MCT4 protein.
Antibody Type	Primary antibody
Immunogen	Recombinant fusion protein of human MCT4
Purification	The antibody was purified by immunogen affinity chromatography.
Molecular Weight	Predicted: 35; Observed: 54 kD
Form/Buffer	Liquid in 0.42% Potassium phosphate, 0.87% Sodium chloride, pH 7.3, 30% glycerol, and 0.01% sodium azide.
Alternative Names	MCT4; MCT5; Monocarboxylate transporter 5; MCT 5; Monocarboxylate transporter 4; MCT 4; Solute carrier family 16 member 4
Gene Symbol	SLC16A4
Entrez Gene	9122(Human); 229699(Mouse)
SwissProt	O15374(Human); Q8R0M8(Mouse)

\*AREX continuously optimizes our products. Webpage content may not reflect the latest updates. For inquiries, please contact [info@arexbio.com](mailto:info@arexbio.com) or your local distributor.

\*Clone Number, Reactivity, Source/Host and Clonality can be found in the product name and Key Features section above.

**DATASHEET****MCT4 Rabbit Polyclonal Antibody**

CAT. NO. APA13701

**DATA**

Western blot analysis of MCT4 expression in mouse skeletal muscle (A) whole cell lysates. (Predicted band size: 35; 42; 46; 49; 54 kD; Observed band size: 54 kD)

**STORAGE**

Store at 4°C short term. For long term storage, store at -20°C, avoiding freeze/thaw cycles.

**NOTE**

For Research Use Only. Not for diagnostic, therapeutics, prophylactic or in vivo use.