

## DATASHEET

# Citrin Rabbit Polyclonal Antibody

CAT. NO. APA13702

### KEY FEATURES

Target	Citrin	Source / Host	Rabbit
Reactivity	Human, Mouse	Clonality	Polyclonal
Applications	WB	Conjugation	Unconjugated
Form / Buffer	Liquid in 0.42% Potassium phosphate, 0.87% Sodium chloride, pH 7.3, 30% glycerol, and 0.01% sodium azide.		Storage at -20°C

### BACKGROUND

Mitochondrial electrogenic aspartate/glutamate antiporter that favors efflux of aspartate and entry of glutamate and proton within the mitochondria as part of the malate-aspartate shuttle. Substrate exchange across the membrane occurs consecutively with one substrate being transported first, then dissociating from the substrate binding site before the second substrate binds for transport in the opposite direction. Also mediates the uptake of L-cysteinesulfinate (3-sulfinyl-L-alanine) by mitochondria in exchange for L-glutamate and proton. Can also exchange L-cysteinesulfinate with aspartate in their anionic form without any proton translocation. Lacks transport activity towards gamma-aminobutyric acid (GABA).

### APPLICATION

To ensure optimal assay performance, AREX recommends conducting reagent titration tailored to each testing system for optimal detection results.

WB	1:500 - 1:1000
----	----------------

\*Results are sample-specific. Please refer to your local assay conditions and test parameters for reference.

### PRODUCT OVERVIEW

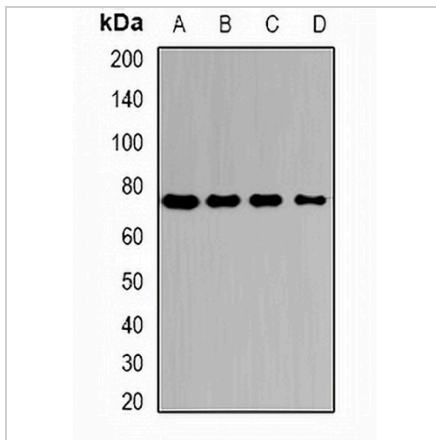
Description	Rabbit polyclonal antibody to Citrin
Specificity	Recognizes endogenous levels of Citrin protein.
Antibody Type	Primary antibody
Immunogen	Recombinant fusion protein of human Citrin
Purification	The antibody was purified by immunogen affinity chromatography.
Molecular Weight	Predicted: 74 kD; Observed: 74 kD
Form/Buffer	Liquid in 0.42% Potassium phosphate, 0.87% Sodium chloride, pH 7.3, 30% glycerol, and 0.01% sodium azide.
Alternative Names	ARALAR2; Calcium-binding mitochondrial carrier protein Aralar2; Citrin; Mitochondrial aspartate glutamate carrier 2; Solute carrier family 25 member 13
Gene Symbol	SLC25A13
Entrez Gene	10165(Human)
SwissProt	Q9UJS0(Human)

\*AREX continuously optimizes our products. Webpage content may not reflect the latest updates. For inquiries, please contact [info@arexbio.com](mailto:info@arexbio.com) or your local distributor.

\*Clone Number, Reactivity, Source/Host and Clonality can be found in the product name and Key Features section above.

**DATASHEET****Citrin Rabbit Polyclonal Antibody**

CAT. NO. APA13702

**DATA**

Western blot analysis of Citrin expression in HepG2 (A), HeLa (B), mouse liver (C), mouse kidney (D) whole cell lysates. (Predicted band size: 74 kD; Observed band size: 74 kD)

**STORAGE**

Store at 4°C short term. For long term storage, store at -20°C, avoiding freeze/thaw cycles.

**NOTE**

For Research Use Only. Not for diagnostic, therapeutics, prophylactic or in vivo use.