

DATASHEET

SMARCAD1 Rabbit Polyclonal Antibody

CAT. NO. APA13705

KEY FEATURES

Target	SMARCAD1	Source / Host	Rabbit
Reactivity	Human, Mouse, Rat	Clonality	Polyclonal
Applications	WB, IF/ICC	Conjugation	Unconjugated
Form / Buffer	Liquid in 0.42% Potassium phosphate, 0.87% Sodium chloride, pH 7.3, 30% glycerol, and 0.01% sodium azide.		Storage at -20°C

BACKGROUND

Protein that possesses intrinsic ATP-dependent nucleosome-remodeling activity and is both required for DNA repair and heterochromatin organization . Combines the ATP-dependent ability to exchange histones, with the chaperone-like ATP-independent activity to deposit histones and assemble nucleosomes . Promotes DNA end resection of double-strand breaks (DSBs) following DNA damage: probably acts by weakening histone DNA interactions in nucleosomes flanking DSBs . Required for the restoration of heterochromatin organization after replication . Acts at replication sites to facilitate the maintenance of heterochromatin by directing H3 and H4 histones deacetylation, H3 'Lys-9' trimethylation (H3K9me3) and restoration of silencing .

APPLICATION

To ensure optimal assay performance, AREX recommends conducting reagent titration tailored to each testing system for optimal detection results.

WB	1:500 - 1:1000
IF/ICC	1:50 - 1:200

*Results are sample-specific. Please refer to your local assay conditions and test parameters for reference.

PRODUCT OVERVIEW

Description	Rabbit polyclonal antibody to SMARCAD1
Specificity	Recognizes endogenous levels of SMARCAD1 protein.
Antibody Type	Primary antibody
Immunogen	Recombinant fusion protein of human SMARCAD1
Purification	The antibody was purified by immunogen affinity chromatography.
Molecular Weight	Predicted: 68; Observed: 120 kD
Form/Buffer	Liquid in 0.42% Potassium phosphate, 0.87% Sodium chloride, pH 7.3, 30% glycerol, and 0.01% sodium azide.
Alternative Names	KIAA1122; SWI/SNF-related matrix-associated actin-dependent regulator of chromatin subfamily A containing DEAD/H box 1; ATP-dependent helicase 1; hHEL1
Gene Symbol	SMARCAD1
Entrez Gene	56916(Human); 13990(Mouse); 312398(Rat)
SwissProt	Q9H4L7(Human); Q04692(Mouse); D3Z9Z9(Rat)

*AREX continuously optimizes our products. Webpage content may not reflect the latest updates. For inquiries, please contact info@arexbio.com or your local distributor.

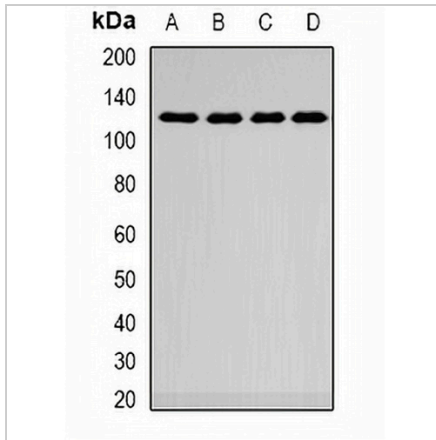
*Clone Number, Reactivity, Source/Host and Clonality can be found in the product name and Key Features section above.

DATASHEET

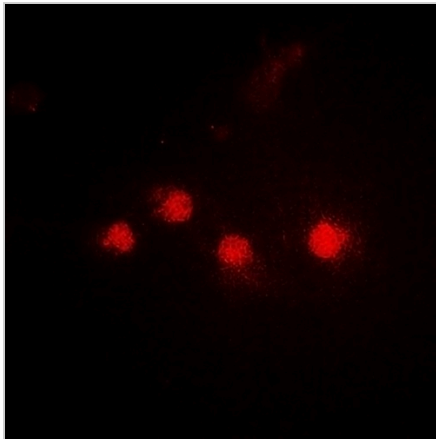
SMARCAD1 Rabbit Polyclonal Antibody

CAT. NO. APA13705

DATA



Western blot analysis of SMARCAD1 expression in A549 (A), HepG2 (B), mouse kidney (C), mouse lung (D) whole cell lysates. (Predicted band size: 68; 117 kD; Observed band size: 120 kD)



Immunofluorescent analysis of SMARCAD1 staining in HepG2 cells. Formalin-fixed cells were permeabilized with 0.1% Triton X-100 in TBS for 5-10 minutes and blocked with 3% BSA-PBS for 30 minutes at room temperature. Cells were probed with the primary antibody in 3% BSA-PBS and incubated overnight at 4 °C in a humidified chamber. Cells were washed with PBST and incubated with a DyLight 594-conjugated secondary antibody (red) in PBS at room temperature in the dark.

STORAGE

Store at 4°C short term. For long term storage, store at -20°C, avoiding freeze/thaw cycles.

NOTE

For Research Use Only. Not for diagnostic, therapeutics, prophylactic or in vivo use.