

DATASHEET

SOAT1 Rabbit Polyclonal Antibody

CAT. NO. APA13709

KEY FEATURES

Target	SOAT1	Source / Host	Rabbit
Reactivity	Human, Mouse, Rat	Clonality	Polyclonal
Applications	WB, IF/ICC	Conjugation	Unconjugated
Form / Buffer	Liquid in 0.42% Potassium phosphate, 0.87% Sodium chloride, pH 7.3, 30% glycerol, and 0.01% sodium azide.		Storage at -20°C

BACKGROUND

Catalyzes the formation of fatty acid-cholesterol esters, which are less soluble in membranes than cholesterol . Plays a role in lipoprotein assembly and dietary cholesterol absorption . Preferentially utilizes oleoyl-CoA ((9Z)-octadecenoyl-CoA) as a substrate: shows a higher activity towards an acyl-CoA substrate with a double bond at the delta-9 position (9Z) than towards saturated acyl-CoA or an unsaturated acyl-CoA with a double bond at the delta-7 (7Z) or delta-11 (11Z) positions .

APPLICATION

To ensure optimal assay performance, AREX recommends conducting reagent titration tailored to each testing system for optimal detection results.

WB	1:500 - 1:2000
IF/ICC	1:50 - 1:200

*Results are sample-specific. Please refer to your local assay conditions and test parameters for reference.

PRODUCT OVERVIEW

Description	Rabbit polyclonal antibody to SOAT1
Specificity	Recognizes endogenous levels of SOAT1 protein.
Antibody Type	Primary antibody
Immunogen	Recombinant fusion protein of human SOAT1
Purification	The antibody was purified by immunogen affinity chromatography.
Molecular Weight	Predicted: 57; Observed: 64 kD
Form/Buffer	Liquid in 0.42% Potassium phosphate, 0.87% Sodium chloride, pH 7.3, 30% glycerol, and 0.01% sodium azide.
Alternative Names	ACACT; AACT1; ACAT; ACAT1; SOAT; STAT; Sterol O-acyltransferase 1; Acyl-coenzyme A:cholesterol acyltransferase 1; ACAT-1; Cholesterol acyltransferase 1
Gene Symbol	SOAT1
Entrez Gene	6646(Human); 20652(Mouse); 81782(Rat)
SwissProt	P35610(Human); Q61263(Mouse); O70536(Rat)

*AREX continuously optimizes our products. Webpage content may not reflect the latest updates. For inquiries, please contact info@arexbio.com or your local distributor.

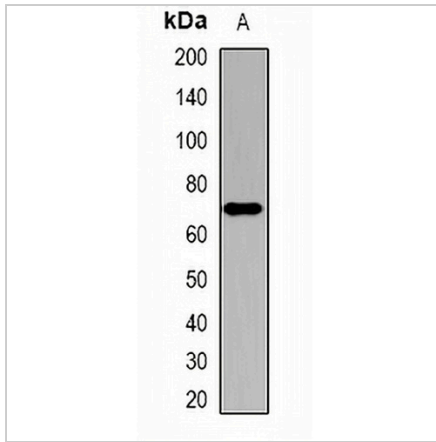
*Clone Number, Reactivity, Source/Host and Clonality can be found in the product name and Key Features section above.

DATASHEET

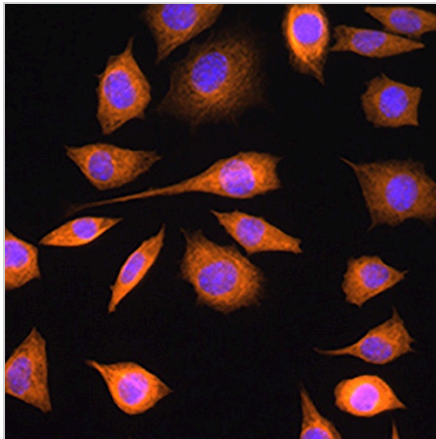
SOAT1 Rabbit Polyclonal Antibody

CAT. NO. APA13709

DATA



Western blot analysis of SOAT1 expression in HEK293T (A) whole cell lysates. (Predicted band size: 57; 58; 64 kD; Observed band size: 64 kD)



Immunofluorescent analysis of SOAT1 staining in L929 cells. Formalin-fixed cells were permeabilized with 0.1% Triton X-100 in TBS for 5-10 minutes and blocked with 3% BSA-PBS for 30 minutes at room temperature. Cells were probed with the primary antibody in 3% BSA-PBS and incubated overnight at 4 °C in a humidified chamber. Cells were washed with PBST and incubated with a AREX® Fluor 594-conjugated secondary antibody (red) in PBS at room temperature in the dark. DAPI was used to stain the cell nuclei (blue).

STORAGE

Store at 4°C short term. For long term storage, store at -20°C, avoiding freeze/thaw cycles.

NOTE

For Research Use Only. Not for diagnostic, therapeutics, prophylactic or in vivo use.