

## DATASHEET

# SPINK1 Rabbit Polyclonal Antibody

CAT. NO. APA13714

### KEY FEATURES

Target	SPINK1	Source / Host	Rabbit
Reactivity	Mouse	Clonality	Polyclonal
Applications	WB	Conjugation	Unconjugated
Form / Buffer	Liquid in 0.42% Potassium phosphate, 0.87% Sodium chloride, pH 7.3, 30% glycerol, and 0.01% sodium azide.		Storage at -20°C

### BACKGROUND

Serine protease inhibitor which exhibits anti-trypsin activity . In the pancreas, protects against trypsin-catalyzed premature activation of zymogens .

### APPLICATION

To ensure optimal assay performance, AREX recommends conducting reagent titration tailored to each testing system for optimal detection results.

WB	1:500 - 1:1000
----	----------------

\*Results are sample-specific. Please refer to your local assay conditions and test parameters for reference.

### PRODUCT OVERVIEW

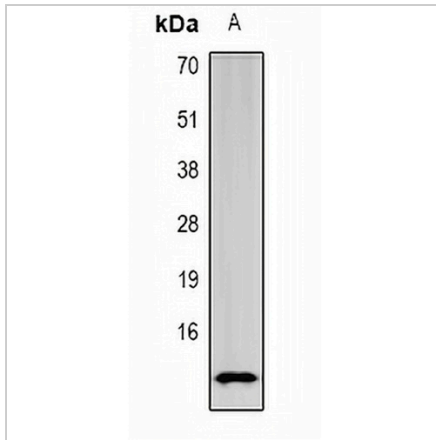
Description	Rabbit polyclonal antibody to SPINK1
Specificity	Recognizes endogenous levels of SPINK1 protein.
Antibody Type	Primary antibody
Immunogen	Recombinant fusion protein of human SPINK1
Purification	The antibody was purified by immunogen affinity chromatography.
Molecular Weight	Predicted: 8 kD; Observed: 12 kD
Form/Buffer	Liquid in 0.42% Potassium phosphate, 0.87% Sodium chloride, pH 7.3, 30% glycerol, and 0.01% sodium azide.
Alternative Names	PSTI; Pancreatic secretory trypsin inhibitor; Serine protease inhibitor Kazal-type 1; Tumor-associated trypsin inhibitor; TATI
Gene Symbol	SPINK1
Entrez Gene	6690(Human)
SwissProt	P00995(Human)

\*AREX continuously optimizes our products. Webpage content may not reflect the latest updates. For inquiries, please contact [info@arexbio.com](mailto:info@arexbio.com) or your local distributor.

\*Clone Number, Reactivity, Source/Host and Clonality can be found in the product name and Key Features section above.

**DATASHEET****SPINK1 Rabbit Polyclonal Antibody**

CAT. NO. APA13714

**DATA**

Western blot analysis of SPINK1 expression in mouse intestine (A) whole cell lysates.  
(Predicted band size: 8 kD; Observed band size: 12 kD)

**STORAGE**

Store at 4°C short term. For long term storage, store at -20°C, avoiding freeze/thaw cycles.

**NOTE**

For Research Use Only. Not for diagnostic, therapeutics, prophylactic or in vivo use.